

DERAR SARAIH & SONS  
FOR ENGINEERING & CONTRACTING



شركة ضرار الصرايرة واولاده  
للهندسة والتعهدات

# COMPANY PROFILE

## 2024

[www.dss.com.jo](http://www.dss.com.jo)



EN ISO 9001:2015  
EN ISO 14001:2015  
ISO 45001:2018

Since 1988



## Company profile

---

Derar al-Saraireh and Sons Co. for Engineering and Contracting, was established in 1988, and still operational in the implementation of construction works of much of the public and governmental buildings, that ranged between educational buildings (schools and universities), housing constructions hospitals, courts and ministries, border crossing centers and departments. And all were completed with high work quality and during the agreed contract term of each.

However, our company is one of the pioneering companies in the construction of buildings in the Hashemite Kingdom of Jordan, and classified with the Department of Governmental Tenders in the following categories:

**first Class building construction | first Class Electromechanical and sustainable energy  
first Class interior finishes and furniture**





## **Our mission**

Achieving the highest credibility and commitment in the implementation of our works, and in dealing with all our partners whether stakeholders or employees, and suppliers, in order to firmly advance and develop our works, and with higher growth rate.

## **Our goal**

The implementation pioneering projects that would serve different vital sectors and reflect the highest global quality specs; and also, we aspire to expand our company on local and regional levels.

## Company accomplishments:

---

To have our obligations optimally fulfilled, we have appointed one of the best qualified technical staff, as distinguished engineers with varied expertise in different fields are employed. Furthermore, we have on hand a large number of effective associates, a legion of technicians and skilled workers. In the implementation of our projects we cooperate with the best suppliers and professionals in various fields to ensure the perfection of our high-end projects. We also have communications with many international and domestic manufacturers to ensure that we always get the right and fitting materials and services for shorter duration of work. In the meantime, we have over 500 employee as administrators, technicians and workers.

In the sake of the speed and quality of our projects, we have acquired the majority of the machinery and equipments needed, without regard of what the cost might be, and indeed, the company assets of different machinery and equipments are worth more than three million Jordanian Dinars. And when in need of specialised equipment or machinery, we have many suppliers on the call ready to supply any machine or equipment we require.

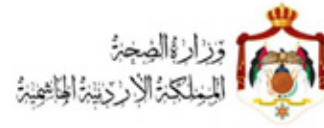




## Our Clients



MINISTRY OF PUBLIC WORKS & HOUSING



MINISTRY OF HEALTH



MINISTRY OF JUSTICE



MINISTRY OF FINANCE



MILITARY HOUSING



ARAB MINING COMPANY



AJIB BANK



MUTAH UNIVERSITY



**USAID**  
FROM THE AMERICAN PEOPLE

USAID





# CONSTRUCTION OF PRINCE HASAN BIN TALAL BRIGADE 60 AND ITS UNITS





## Construction of Prince Hasan Bin Talal Brigade 60 and its units

| Number |                          | Item  |
|--------|--------------------------|---|
| 1      | Project Name             | Construction of Prince Hasan Bin Talal Brigade 60 and its units |
| 2      | Client                   | Directorate Of Housing and Military Works                       |
| 3      | Tender Reference         | ع س ش / 139 / 2022  |
| 4      | Tender Amount            | 30,825,625.52 JOD   |
| 5      | Date of Order to Proceed | 2023/7/19   |
| 6      | Consultant               | Directorate Of Housing and Military Works                       |

## Project Components Description

| Number |                   | Item  |
|--------|-------------------|---|
| 1      | Nature of project | All excavation, construction, architectural and electromechanical works in the project for 269 buildings, in addition to external works, roads, Yards and sidewalks with an area equivalent to 400,000 square meters. The work also includes the execution of metal works for hangars, canopies and UBM (K-Span) arc metal buildings. |
| 2      | Project Location  | Shwea'er – Azraq Road   |
| 3      | Buildings Area    | 81,000.00 m2  |
| 4      | Plot Area         | 1000000 square meters   |
| 5      | Number of floors  | 269 buildings   |



## Construction of Prince Hasan Bin Talal Brigade 60 and its units

| Number |                | Item   |
|--------|----------------|--|
| 6      | Scope of Works | <ol style="list-style-type: none"> <li>1. Surveying work for the entire project land area and soil examination work for all project building sites.</li> <li>2. Earthworks and excavation works for all works, including buildings, Yards, and roads.</li> <li>3. Construction works for all elements of the project, including concrete buildings, metal buildings, and arch buildings, with a number of 269 buildings (facilities). The works include a mosque building with a minaret 31 meters high and a dome 10 meters in diameter.</li> <li>4. Architectural and finishing works for all works in the project. The works include the following: <ol style="list-style-type: none"> <li>a. Block works, plastering and painting works.</li> <li>b. Tile works for floors and walls.</li> <li>c. Stone facade works, plastered facades and painting</li> <li>d. Aluminum and carpentry works, metal screens works, railings, and PVC doors and windows.</li> <li>e. Roof waterproofing works.</li> <li>f. Sidewalks tiling and Curbstone work around buildings.</li> <li>g. Fabrication and installation of granite counters.</li> </ol> </li> <li>h. Secondary ceiling works, including tile ceilings, gypsum board ceilings, and aluminum tile ceilings.</li> <li>5. Electrical works: <ol style="list-style-type: none"> <li>a. First fix works, wiring and installations of several systems for all facilities in the project. These systems include: <ol style="list-style-type: none"> <li>i. Lighting system.</li> <li>ii. Power supply system.</li> <li>iii. Fire Alarm System.</li> <li>iv. Grounding System.</li> <li>v. Lightning protection system.</li> <li>vi. Power for Mechanical equipment system.</li> <li>vii. Electrical generators</li> <li>viii. Communications system and data system.</li> <li>ix. Surveillance camera system.</li> </ol> </li> <li>b. First fix works, wiring and installations for external works and external distribution networks, including: <ol style="list-style-type: none"> <li>i. Electricity distribution network (suspended and underground)</li> <li>ii. External lighting poles in the street and squares</li> <li>iii. Communications network and external data.</li> </ol> </li> </ol> </li> </ol> |





## Construction of Prince Hasan Bin Talal Brigade 60 and its units

| Number |                | Item  |
|--------|----------------|---|
| 6      | Scope of Works | <p>6. Mechanical works:</p> <ul style="list-style-type: none"><li>a. First fix works, Piping and installations of several systems for all facilities in the project, and these systems include:<ul style="list-style-type: none"><li>i. Water supply and distribution system.</li><li>ii. Drainage system.</li><li>iii. Air conditioning and ventilation system.</li><li>iv. Firefighting system.</li></ul></li><li>b. First fix works, piping and installations for external works and external distribution networks, including:<ul style="list-style-type: none"><li>i. Water distribution network for project sites.</li><li>ii. Sewage network for project sites</li></ul></li></ul> <p>7. Roads and yards works:</p> <ul style="list-style-type: none"><li>a. Road excavation works for the required levels.</li><li>b. Execution of roads works and base Course yards.</li><li>c. Execution of roads works and yards paved with asphalt.</li><li>d. Execution of concrete and sidewalk works for roads and yards.</li><li>e. Painting sidewalks and marking parking lots.</li></ul> <p>8. Other specialized works:</p> <ul style="list-style-type: none"><li>a. Swimming pool works with a pool services building. The work includes the pool with all its components and equipment, including pumps, filters, and specialized lighting.</li><li>b. Supply and installation of six Overhead cranes for maintenance and repair hangars, with capacities ranging from 5 tons to 30 tons.</li><li>c. Design and Execution of concrete floor supporting heavy machinery with metal canopies, with an area of 20,000 square meters.</li></ul> |



## Construction of Prince Hasan Bin Talal Brigade 60 and its units

| Number |  | Item   |
|--------|--|--|
| 7      | Project Components:                        | <p>The project consists of seven main sites located on a land area of 1,000,000 square meters. These sites include the following:</p> <ol style="list-style-type: none"><li>1. 3rd Tank Battalion.</li><li>2. 5th Tank Battalion.</li><li>3. 23rd Artillery Battalion.</li><li>4. The 3rd Royal Guard Battalion.</li><li>5. Brigade Command.</li><li>6. Residence of commanders and staff.</li><li>7. Services area.</li></ol>   |
| 8      | External works consists of the following : | <p>External works consists of the following :</p> <ol style="list-style-type: none"><li>a. Construction of a road network paved with asphalt and Base course.</li><li>b. Pavement works and rainwater drainage works.</li><li>c. Yard works, with an area of 80,000 square meters</li><li>d. Six playground fields.</li><li>e. External walls of 4200 meters long.</li><li>f. Fencing works between different sites, with a length of 6,000 meters.</li><li>g. Six External gates and five side gates.</li></ol> |





# MINISTRY OF FINANCE COMPLEX CONTRACT 1

---



## Project description Ministry of finance complex (contract 1)

| Number |                          | Item                                |
|--------|--------------------------|-------------------------------------|
| 1      | Project Name             | Ministry of Finance Complex         |
| 2      | Client                   | Ministry of Public work and housing |
| 3      | Tender Reference         | <b>2017/27</b>                      |
| 4      | Accepted Contract amount | <b>27.91 Million JD</b>             |
| 5      | Final amount             | Under construction                  |
| 6      | Date of Order to Proceed | 2018/2/25                           |
| 7      | Consultant               | Baha Consulting engineering         |
| 8      | Contract type            | Main Contractor                     |

## Project Components Description

| Number |                   | Item  |
|--------|-------------------|---|
| 1      | Nature of project | Execution of interior finishes works, Elevations, External works and Electromechanical works for Ministry of finance Complex new building with total area of 69,500 m2, Consists of 4 basements, ground floor, mezzanine floor and 9 floors |
| 2      | Project Location  | Awajan – Amman  |
| 3      | Buildings Area    | 69,500 m2   |
| 4      | Plot Area         | 4500 sqr.mtr  |
| 5      | Number of floors  | 14  |







6

## Scope of works

- Interiors finishes for all areas
- Construction of concrete Slabs at required designated locations
- Construction of Steel slabs at required designated locations
- Construction of interior steel structure stair
- Stone Elevations Works
- Curtain walls works
- Electromechanical works for whole project areas including external area
- Fences, parking spaces and Gates
- Boundary wall
- Solar System work
- External area work

7

## Project components

### Main Building includes :

- Departments offices for ministry
- Ministers offices and secretaries
- Prayer areas for men and women
- Waiting halls
- Meeting Rooms , archives rooms and Training rooms
- Terraces
- Two theaters ( first one with a capacity of 283 seats and the second with a capacity of 80 seats )
- Library (double-volume) with a capacity of 70 seats
- Interior Steel structure stairs
- 4(four) Basements areas
- Storage areas and services rooms
- Car parking areas with total capacity of 606 cars
- Sloped water Falls
- Internal court contains planters and 5 Stone rectangular water Features
- Photo voltaic cells

### **Electrical Works includes**

- Power supply network for all project areas
- Solar system spread over an area of 2516 m<sup>2</sup> with a capacity of 400 kW
- Emergency power supply system using backup generators and UPS system
- Audio system and IP telephony system
- Data network system for entire building and departments
- Earthling system
- Lighting protection system
- Busbar system
- Led light system for water fall
- Façade lighting
- External lighting
- Queuing system
- CCTV System(Security system)
- Access door control system
- Seven (7) Transformer stations with capacity of 10 mega watt
- Four (4) Generators with capacity of 900 kilo volt ampere
- Two (2 )UPS system with 120 kVA and 160 kVA

### **Mechanical works includes**

- Plumbing works including handicapped toilets
- HVAC system for entire building
- Firefighting systems using sprinklers system and clean agent fire suppression system (FM200)
- Fresh air supply system
- Irrigation system
- Car park ventilation by jet fans
- Stair case pressurization system
- BMS
- Boiler rooms
- Rain water piping system & rain water collection tank for irrigation purposes
- Mechanical works for water falls and water features



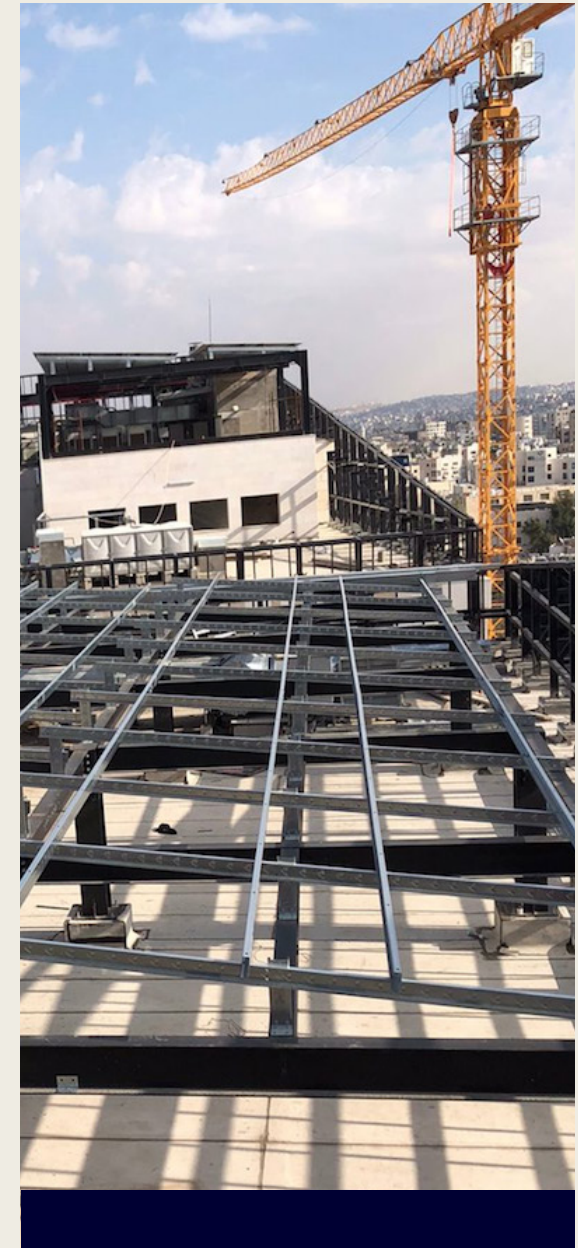


## Finishes Works includes :

- External elevations consists of :
  - Curtain wall system with double glazed vision panels
  - Cable truss façade system –single layer glass
  - Aluminum framed double glazed curtain wall system
  - Limestone cladding system
  - Basalt cladding system
- Installing and operating 6 elevators and 2 escalator servicing the building

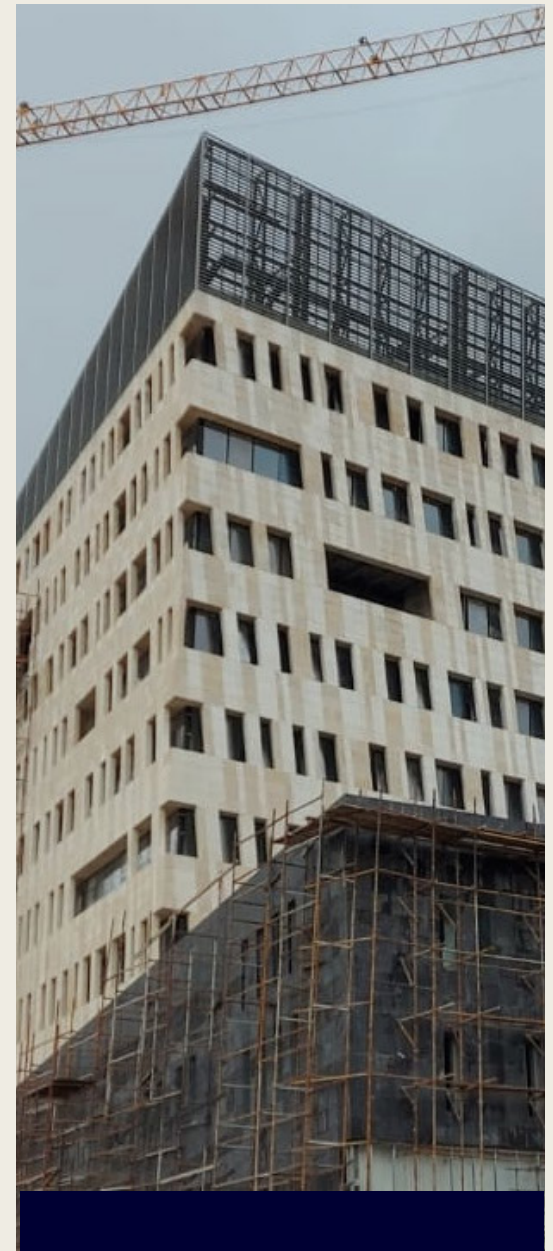
### Ceiling finishes consist of :

- Fire resistance, moisture resistance Gypsum board for wet Areas
- Suspended mineral fiber board acoustical tile fire resistant
- Internal doors consists of laminated timbered doors leaf
- Minister's office and secretaries offices consists of Oak wood veneer one hour fire rated doors
- Steel doors for plant rooms and shafts access doors
- Three (3) Photo cell doors for the main entrances
- Granite tile for Internal Steel structure stairs
- Granite tile for Internal stairs
- Stair balustrade & handrails
- Ceramic tile for walls (wet areas)
- Porcelain tile for floor
- Granite tile for Lifts elevations
- Sound insulation for theaters and library
  - o.Wood stage and flooring for training hall
- Handicapped tempered glass counters
- Tempered glass counters
- Fire rated doors installed at required designated locations
- Toilets partitions are from HPL – high pressure laminate panels
- Demountable partitions for offices made form tempered glass
- Steel louver shade (Aluminum sun screen)-Top of roof
- Photo voltaic cells
- Façade cleaning system ( BMU )



### **External works consists of the following :**

- External boundary fence made of Steel
- External boundary wall made of basalt stone
- Parking space area with a capacity of 23 cars
- Basalt footpath paving.
- Limestone paving for Internal court
- Five (5) Stone rectangular water Features in internal court
- Seven (7) sliding steel gate doors
- Seven (7) Single leaf steel gate doors
- Five (5) Double leave steel gate doors
- Four(4) automatic operated Boom Gates with aluminum folding arm
- Guard rooms
- Planters &sidewalks
- External playground area for kindergarten
- Wooden pergola shade structure for the kindergarten playground Area
- Underground water tank with capacity of 1600 m3 meters approximately

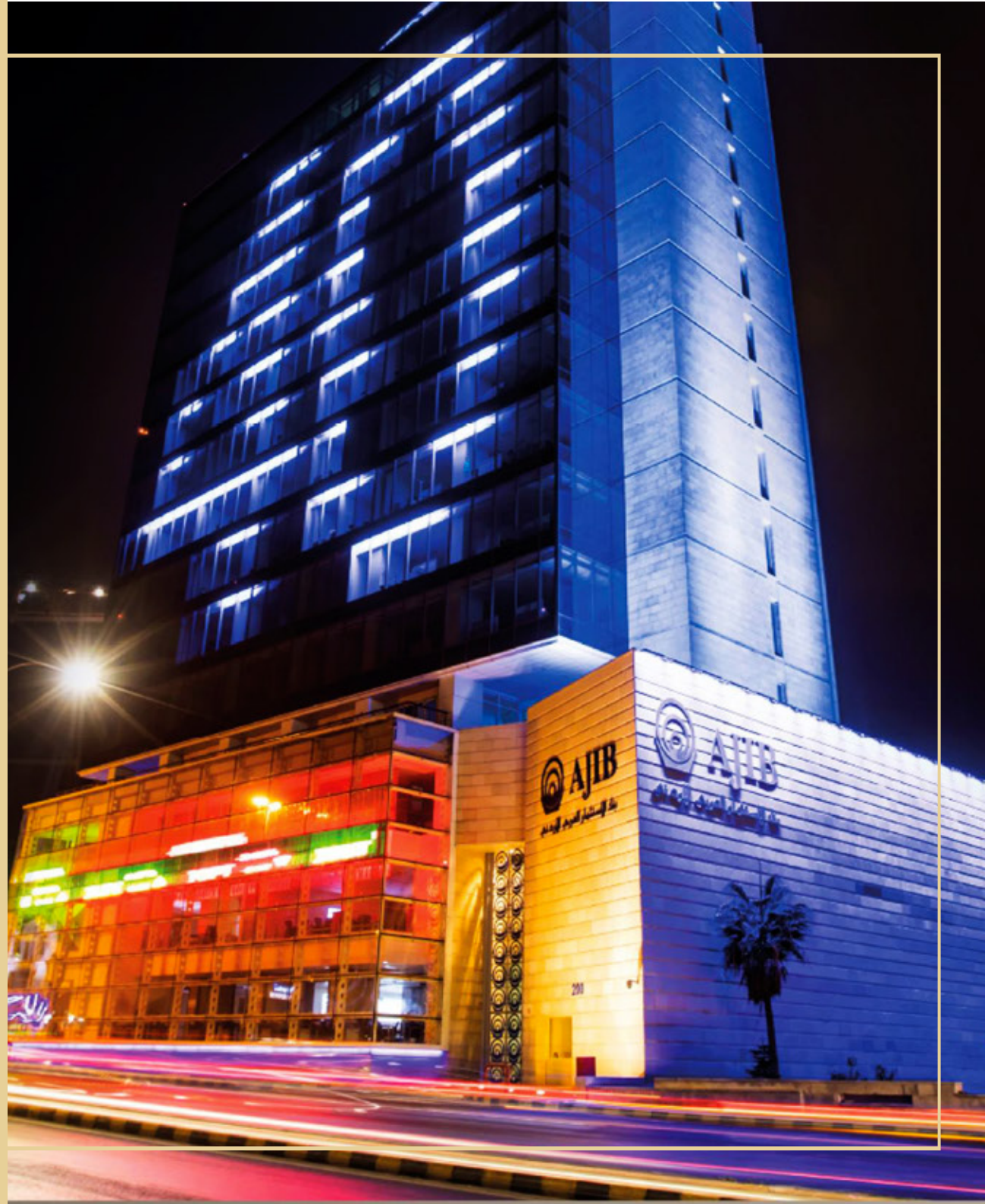






بنك الاستثمار العربي الأردني

PROJECT DESCRIPTION ARAB  
JORDAN INVESTMENT BANK  
HEADQUARTERS



## Project Description Arab Jordan Investment Bank Headquarters

| Number |                         | Item  |
|--------|-------------------------|---|
| 1      | Project Name            | Arab Jordan Investment Bank Headquarters building (package 3) |
| 2      | Client                  | Arab Jordan Investment Bank                                   |
| 3      | Tender Reference        | AHJ490  |
| 4      | Tender Amount           | 18.5 Million JOD Actual Bid Value : 20.5 Million JD           |
| 5      | Date of Order to Procee | 2011/9/5  |
| 6      | Consultant              | Arabtech Jardaneh engineers and project management            |
| 5      | Contract type           | Main Contractor   |

## Project Components Description

| Number |                   | Item  |
|--------|-------------------|---|
| 1      | Nature of project | Finishing and electromechanical works execution for the Arab Jordan Investment Bank headquarters. |
| 2      | Project Location  | Sixth Circle - Amman.   |
| 3      | Buildings Area    | 30000 sqr.mtr.  |
| 4      | Plot Area         | 4500 sqr.mtr  |
| 5      | Number of floors  | 22 floors including 7 basements and roof.   |







6

## Scope of works

works were executed in joint venture with Al-Hamad Construction and development company (50/50 Joint venture)

- Finishing works and interior finishes for all areas.
- External works and facade and elevation finishes.
- Electromechanical works for whole project area.
- Fences, yards, parking spaces and gates.

7

## Project components

### Main building includes :

- Upper management offices.
- Bank departments offices.
- Branch offices and branch tellers.
- Concrete underground water tanks at seventh basement.
- parking area at basements (basement 6 to basement 2)
- Storage areas and service rooms.

### External elevations

- Stone elevations composing of Jerusalem natural stone installed using dry fix (mechanical fixation) method, stone rows with heights 40 ,20 and 50cm.
- Aluminum glazed curtain walls.
- Spider system glazed curtain walls.
- Skylight installed using steel main structure and glazing by spider system.
- Media wall, external and facade lighting.

## Internal finishes include

### (Interior finishes witnessed major redesign by an international interior design firm)

- Building is served by 6 elevators including 1 panoramic lift.
  - All ceilings are finished by suspended ceiling.
  - Internal partitions compose of a mix between gypsum board partitions and glass partitions in addition to block partitions.
  - Doors installed are made of steel fire rated doors, walnut wood veneer finish doors with solid walnut frames and laminated finish doors with hardwood frames, also, wooden doors include a group of fire rated doors.
  - Internal flooring finishes include carpet tile, crema marfil marble and porcelain.
  - Lift lobbies are finished with crema marfil and light and dark emprador marble.
  - Internal elevations are finished using paint, wood cladding, marble and porcelain.
  - VIP parking area and back entrance flooring composes of stamped colored concrete.
  - Counters include wood and marble finishes.
  - Partitions include sound insulation.
  - Roof flooring include water and thermal insulation.
- Upper management floors include high end finishes, including wood elevation finishes, circular lobby and custom interior finishes.
- Installation of window cleaning system for elevations.
  - Blinds installed for all elevations with BMS control.
  - Ceiling includes special decorations as well as mineral fiber tile ceiling.







### Electrical works include

- Power supply system for entire building areas.
- All power supply to work stations using under floor trunking system.
- Internal lighting system, external lighting system, facade lighting and emergency lighting system.
- Emergency power supply system using backup generator.
- addressable fire alarm system
- SMATV, AV system and IP telephony system.
- Data network system using latest technologies by CAT7a cables and fiber optic cables.
- Building management system.
- CCTV and access control system.
- Earthing and lightning protection system.

### Mechanical works include

- Plumping works including handicap toilets.
- HVAC system with connection to BMS and emergency HVAC.
- Fire fighting system using sprinklers and clean agent fire suppression system (NOVEC)
- Air circulation system for car parks using jet fans.
- pump room for water tanks.

## External works consist of the following

### External works consist of the following:

- Entrance area finished by colored stamped concrete.
- Wood composite panels elevations for multipurpose hall.
- External lighting.
- Planters.

## Variations and Modifications

Multiple variations took place during the execution period of project works, summarized as follows:

- Major variation to finishes changing blue pearl granite to different material.
- Major variations to internal finishes works due to project redesign, variation included reallocation of partitions changing material and elevation finishes.
- Major variation to electromechanical systems including variations to HVAC systems, power supply system, lighting system, control system, and all other remaining systems to match with the redesign of project interior design.

### \* Note

a suspension of works occurred during the period Dec/2011 till Sep/2012 awaiting redesign of project, also, multiple variations variations took place afterwards to cope with the new design.





# JARASH AND AJLOUN MILITARY HOSPITAL



## Project Description Jarash and Ajloun Military hospital

| Number |                          | Item                                      |
|--------|--------------------------|---|
| 1      | Project Name             | Jarash and Ajloun Military Hospital       |
| 2      | Client                   | Directorate of housing and Military works |
| 3      | Tender Reference         | 2009/197/ ع س ش                           |
| 4      | Accepted Contract amount | 27.36 million JD                          |
| 5      | Final amount             | 36.5 million JD                           |
| 6      | Date of Order to Procee  | 2009/11/12                                |
| 7      | Consultant               | Directorate of housing and Military works |
| 8      | Contract type            | Main Contractor                           |

## Project Components Description

| Number |                   | Item   |
|--------|-------------------|--|
| 1      | Nature of project | construction and finishing of hospital building including all sections and departments with a capacity up to 400 beds, works include the main building and all secondary buildings and external works as well as Electromechanical works, interior finishes and medical equipment and furniture. |
| 2      | Project Location  | Ebbien e'bllien - Ajloun   |
| 3      | Buildings Area    | Main building, 37000 sqr.mtr - secondary buildings 5500 sqr.mtr.   |
| 4      | Plot Area         | 55000 sqr.mtr  |
| 5      | Number of floors  | 10 floors including 3 basements and roof.  |







6

### Scope of works

- Skeleton works of main and secondary buildings
- Finishing works and interior finishes for all areas
- Electromechanical works for whole project area including secondary buildings and external area
- Fences, yards, parking spaces and gates

## 7 Project components

### Main building includes

- departments offices and sections for various specialties.
- Patient rooms, suites and clinics.
- Eight Main operation theaters (area 2500 sq.mtr).
- Laboratories, pharmacy, dialysis sections and kitchen and laundry.
- Waiting halls with special designs.
- storage areas and service rooms.
- Car parking areas.

### Electrical works include

- Power supply network for all project areas.
- Emergency power supply system using backup generator and UPS system.
- Addressable fire alarm system.
- Audio system and IP telephony system.
- Data network system for the entire building and departments.
- Central clock system, public address and nurse call system.
- Bed head units.
- Earthling system for operation theaters and all other electrical systems as required.
- Lightening protection system.

### Mechanical works include

- Plumping works including handicapped toilets.
- HVAC system for entire building.
- Fire fighting systems using sprinkler system and clean agent fire suppression system (FM200)
- Fresh air supply system.
- Medical gases networks and pressurized air system.
- Water purification system for dialysis.
- supply, install and operate medical equipment.
- Kitchen and laundry.
- Physical and hydrotherapy units.
- laboratories preparation (furniture and services)
- Irrigation system.



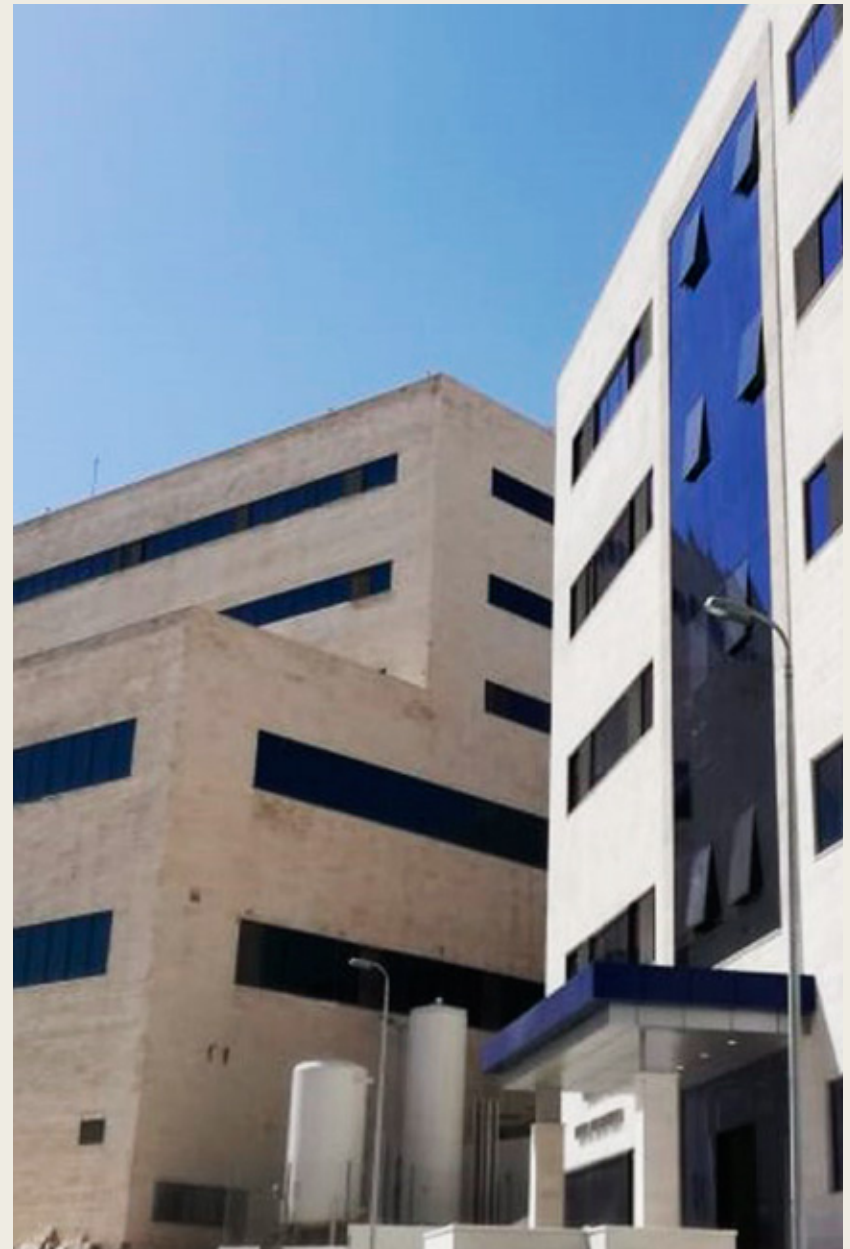
### **finishes works include**

- Building elevations composing of natural stone (ma'an stone).
- Installing and operating 11 elevators servicing the building.
- All internal ceilings compose of suspended ceiling.
- Laminated internal wooden doors with steel frames.
- Flooring composes of porcelain and granite ceramic.
- Halls tiling and lifts elevations tiled with natural granite.
- Gypsum board partitions installed at several locations.
- h.Sound insulation and custom decoration for operation theaters.
- Internal stairs are tiled with natural granite.
- Counters are made of wood, granite and Korean.
- Works include seismic and expansion joints.
- Wall protection and corner guards installed.
- Balcony railing made of stainless steel.
- Fire rated doors installed at required designated locations.

---

### **External works consist of the following:**

- secondary buildings including :
- doctors dorms (males)
- doctors and nurses dorms (females)
- nurses dorms (males)
- Security rooms.
- Main gate.
- Mosque.
- Internal walls and fences are finished with natural stone.
- Service roads and parking spaces are paved with asphalt with an area of approximately 15000 sqr.mtr.
- Helicopter pad
- Planters and side walks.
- External lighting and irrigation systems.





PROJECT  
DESCRIPTION ARAB  
MINING COMPANY  
HEADQUARTERS  
& INSTITUTE





## Project Description Arab Mining Company Headquarters and institute

| Number |                          | Item  |
|--------|--------------------------|---|
| 1      | Project Name             | Arab Mining Company Headquarters and Institute. |
| 2      | Client                   | Arab Mining Company                             |
| 3      | Accepted Contract amount | 18.5 million JD                                 |
| 4      | Final amount             | 20.9 million JD                                 |
| 5      | Date of Order to Procee  | 2015/9/3  |
| 6      | Consultant               | Bitar Engineers And Project Management          |
| 7      | Contract type            | Main Contractor                                 |

## Project Components Description

| Number |                   | Item  |
|--------|-------------------|---|
| 1      | Nature of project | Skeleton, Finishing and Electromechanical Works Execution For The Arab Mining Company Headquarters And Institute. |
| 2      | Project Location  | Airport road - Amman.   |
| 3      | Buildings Area    | 20000 sqr.mtr.  |
| 4      | Plot Area         | 10000 sqr.mtr   |
| 5      | Number of floors  | 7 floors including 1 basement and roof.   |







6

## Scope of works

- Excavation and skeleton works for three buildings.
- Finishing works and interior finishes for all areas.
- External works and facade and elevation finishes.
- Electromechanical works for whole project area.
- Fences, yards, parking spaces and gates.

7

## Project components

### Arab Mining Company building - Organization building

- Civil works including excavation and skeleton works.
- Floor Finishes works including tiling by engineered marble, porcelain, natural stone and natural marble.
- Ceiling finishes works include suspended ceiling using gypsum board with decoration and mineral fiber tiles and metal ceiling.
- Partition finishes works include wood cladding, paint, stone cladding, porcelain and metal cladding.
- Electrical works include power system, lighting system, security system, BMS, addressable fire alarm system, emergency power generation system, earthing and lightening protection.
- Mechanical works include plumping, HVAC system using VRF and fire fighting network using sprinkler system and clean agent fire suppression system.

### Arab Mining institute building

- Civil works including excavation and skeleton works.
- Floor Finishes works including tiling by engineered marble, porcelain, natural stone and natural marble.
- Ceiling finishes works include suspended ceiling using gypsum board with decoration and mineral fiber tiles and metal ceiling.
- Partition finishes works include wood cladding, paint, stone cladding, porcelain and metal cladding.
- Electrical works include power system, lighting system, security system, BMS, addressable fire alarm system, emergency power generation system, earthing and lightening protection.
- Mechanical works include plumping, HVAC system using VRF and fire fighting network using sprinkler system and clean agent fire suppression system.
- Works include furniture and counters and equipment installation for laboratories at building with all electromechanical services works.



## Auditorium and Museum building

- Civil works including excavation and skeleton works.
- Floor Finishes works including tiling by engineered marble, porcelain, natural stone and natural marble and carpet
- Ceiling finishes works include suspended ceiling using gypsum board with decoration and mineral fiber tiles and metal ceiling, with acoustical ceiling.
- Partition finishes works include wood cladding, paint, stone cladding, porcelain and metal cladding, and acoustic wall covering for auditorium.
- Works include wood chairs and showcases embedded within stone walls and stand alone show cases for museum area.
- Electrical works include power system, lighting system, security system, BMS, addressable fire alarm system, emergency power generation system, earthing and lightening protection with AV system.
- Mechanical works include plumbing, HVAC system using VRF and fire fighting network using sprinkler system and clean agent fire suppression system.

## External works consist of the following

- Buildings elevation consists of Jerusalem stone cladding installed using dry fixing method with aluminum glazed curtain walls.
- Dome skylight for Auditorium and museum building with diameter of 31.6m and height of 15.8m.
- External lighting.
- Planters and acrylic domes.
- Sidewalks and landscape works

## mainly when the almost finished parts in the project

In the last year large number of modifications or variation orders were issued mainly when the almost finished parts of the project In addition, approvals of new design of some parts of the work mainly external walls were given after long period of time.



PROJECT IS  
RENOVATION  
OF QUEEN ALYA  
MILITARY HOSPITAL

---





## Project Description Renovation Of Queen Alia Military Hospital

| Number |                         | Item   |
|--------|-------------------------|--|
| 1      | Project Name            | Renovation Of Queen Alia Military Hospital                     |
| 2      | Client                  | Royal Medical Services – Establishment of Housing And Military |
| 3      | Tender Reference        | 2013/76/ ع س ش   |
| 4      | Tender Amount           | 15.75 Million USD Actual value : 19 Million USD                |
| 5      | Date of Order to Procee | 2014/07/01   |
| 6      | Consultant              | Consolidated Consultant Group (CC)                             |

## Project Components Description

| Number |                   | Item  |
|--------|-------------------|---|
| 1      | Nature of project | Rehabilitation and expanding the main hospital building including removal of all existing finishes and electromechanical works and executing the building according to the new designs and specifications in compliance to the latest requirements of medical facilities specifications in addition to an extension to the hospital (new department), also the works include maintenance of existing stone elevations and new external parking areas. Works also include coordination and installation of interior decorations and medical furnature. |
| 2      | Project Location  | Amman - Jordan  |
| 3      | Buildings Area    | 17000 sqm   |
| 4      | Plot Area         | 10000 sqm   |
| 5      | Number of floors  | 8 floors including 2 basements  |





|   |                           |  |
|---|---------------------------|--|
| 6 | <b>Scope of works</b>     | <ul style="list-style-type: none"> <li>• Construction and finishing of the hospital extension.</li> <li>• Demolition and removal of existing block walls, tiles, secondary ceilings and electromechanical works.</li> <li>• Executing all electromechanical works for the building and site.</li> <li>• Exterior fences, yards and parking areas.</li> </ul>   |
| 7 | <b>Project components</b> | <div> <div> <b>1.Main Building includes</b> <ul style="list-style-type: none"> <li>• Hospital management offices and Departments' offices</li> <li>• Patient rooms and ICU department</li> <li>• Major operation rooms ( 3 rooms)</li> <li>• Laboratories, pharmacy, radiology, dialysis section, main kitchen and laundry.</li> <li>• Waiting halls with special designs and decorations.</li> <li>• Storage and service rooms</li> <li>• Car parking areas.</li> </ul> </div> <div> <b>Electrical Works includes</b> <ul style="list-style-type: none"> <li>• Power supply network for all project's areas</li> <li>• Emergency power supply using backup generators and UPS system</li> <li>• Addressable fire alarm system</li> <li>• Audio system and IP telephony system</li> <li>• Data network system for the entire building and departments</li> <li>• Central clock system, nurse call and public address system</li> <li>• Bed head units</li> <li>• Earthing system for operation rooms and other services.</li> <li>• Access control system</li> <li>• Closed circuits TV system (CCTV)</li> <li>• Two passengers left (1600 kg)</li> <li>• Two bed lefts (1600kg)</li> <li>• Dump waiter (500 kg)</li> <li>• Lighting protection system</li> </ul> </div> </div> <div> <div> <b>Mechanical works include</b> <ul style="list-style-type: none"> <li>• Plumping works including handicapped Lavatories</li> <li>• HVAC system for entire building</li> <li>• Firefighting systems using sprinkler system and clean agent fire suppression system (fm200)</li> <li>• Fresh air supply system</li> <li>• Medical gases networks and pressurized air system</li> <li>• Catalytic water treatment system</li> <li>• Ro Water treatment system</li> <li>• Hot water calorifier system</li> </ul> </div> <div> <b>Finishes Works includes</b> <p><b>External elevations consists of:</b></p> <ul style="list-style-type: none"> <li>• Curtain wall system with double glazed vision panels</li> <li>• Stone cladding system (Rewashed Stone )</li> </ul> <p><b>Installing and operating 4 main elevators and 2 Dump waiters servicing the building</b></p> </div> </div> |

### Internal ceilings compose of:

- Fire resistance, water repellent Gypsum boards for wet Areas
- Acoustic mineral fiber suspended ceiling tiles for patient rooms
- Laminated internal wooden doors
- Marble wall cladding system (Crema Marfil) for corridors and lifts' elevations
- terrazzo tile covered with PVC for Patients' corridor and patients' rooms
- Toilets' walls tiled with ceramic
- Floor tiling of porcelain (granite pattern).
- High pressure laminate wall cladding system(HPL) for Toilets' partitions
- Internals stairs are tiled with Granite
- Counters are made of HPL panels for elevations and PDF for tops
- Marble Emprador used for vanities' tops
- Fire rated doors installed at required designated locations
- Stainless steel balustrade
- Partitions are made of light weight block (Bozolani)
- Wall lining system comprising of lead for x-ray rooms.
- shield wooden doors for X-ray rooms
- Signage system



### Structural steel work

Complete Steel structure hanger has been constructed in Marka military hospital for the purpose of storage.

### External works consists of the following

- External walls
- Service roads and Parking areas paved with asphalt
- Sidewalks and planters
- External Lighting

### Variation and Modifications

- Demolishing of the existing elevation and Re built it using Stone cladding and curtain walls
- Introducing a new item -Laboratory furniture
- Introducing a new item - Fume hood cabinets
- Introducing a new item - IP telephony system
- Substantial modifications on timbered doors specifications
- Using Bozolani lightweight block instead of the BOQ Specified block (Thermo stone block) for the internal partitions
- Substantial modifications on laundry and kitchen equipment





# MUDAWARA BORDER CROSSING CENTER



## Al-Modawwarah Border Center

| Number |                          | Item                                |
|--------|--------------------------|-------------------------------------|
| 1      | Project Name             | Al-Modawwarah Border Center         |
| 2      | Client                   | Ministry of Public work and housing |
| 3      | Tender Reference         | 2008/121                            |
| 4      | Accepted Contract amount | 14.72 million JD                    |
| 5      | Final amount             | 16.2 million JD                     |
| 6      | Date of Order to Procee  | 2008/11/23                          |
| 7      | Consultant               | Engicon - Consulting Engineers      |
| 8      | Contract type            | Main Contractor                     |

## Project Components Description

| Number |                   | Item  |
|--------|-------------------|---|
| 1      | Nature of project | construct Two main office buildings, gates, mosque, new highways and roads and Electromechanical work for the whole project |
| 2      | Project Location  | Al-Modawwarah – Ma'an District  |
| 3      | Buildings Area    | 9300 m2   |
| 4      | Plot Area         | 2,000,000.00 m2   |
| 5      | Number of floors  | 2   |







|   |  |
|---|--|
| 6 | <b>Scope of works</b> <ul style="list-style-type: none"> <li>• Construction and finishing works for departures and arrivals buildings</li> <li>• Installation of Gates</li> <li>• Construction of the mosque</li> <li>• Construction of new highways and roads of about 100000m2, with two roundabouts, sidewalks, fence work, planter work, and culvert boxes.</li> <li>• Construction of 5000m2 fair face concrete separation walls with sliding gates.</li> <li>• Construct Shelters for checking goods (arrival and departure busses&amp; trucks)</li> <li>• Maintenance work for the personnel building (1600m2)</li> <li>• Electromechanical works for the whole project</li> </ul>  |
| 7 | <b>Project components</b> <div> <div> <b>Main building includes</b> <ul style="list-style-type: none"> <li>• Arrivals' building (2600m2)</li> <li>• Departures' building(2400m2)</li> <li>• Gates(800m2)</li> <li>• Concrete &amp; steel shelters for trucks purposes</li> <li>• Passengers' steel shelter building (400m2)</li> <li>• Mosque(300m2)</li> <li>• Electrical generators chamber</li> <li>• Trucks weighing station</li> </ul> </div> <div> <b>Electrical Works includes</b> <ul style="list-style-type: none"> <li>• Power supply network for all project areas</li> <li>• Emergency power supply system using backup generators and UPS system</li> <li>• Audio system and IP telephony system</li> <li>• Data network system for entire building and departments</li> <li>• Earthing system</li> <li>• External lighting</li> <li>• CCTV System(Security system)</li> <li>• Access door control system</li> <li>• Voice evacuation system</li> <li>• communications towers</li> <li>• Fiber optic system</li> </ul> </div> </div> <div> <b>Electrical Works includes</b> <ul style="list-style-type: none"> <li>• Plumbing works including handicapped toilets</li> <li>• HVAC system for entire building</li> <li>• Firefighting systems using sprinklers system and clean agent fire suppression system (FM200)</li> <li>• Irrigation system</li> <li>• Solar system</li> <li>• Installation of Air screens system for arrivals and departures buildings</li> </ul> </div> |

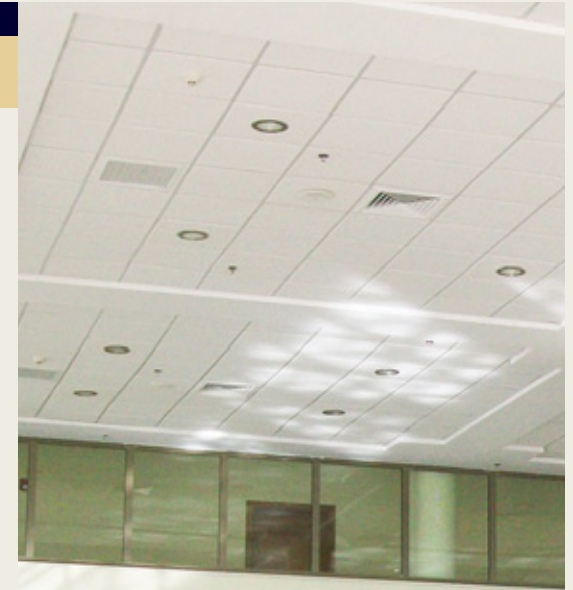


## Finishes Works includes

- External elevations consists of
  - Special design stone work
  - Curtain wall system with double glazed vision panels
- Ceiling finishes consist of suspended mineral fiber board and gypsum board
- Internal doors consists of laminated timbered doors
- Fire rated doors for buildings, electric & server rooms
- Granite tile for Internal stairs and entrances
- Special design granite tile floor for departures and arrivals' buildings
- Raised floors for computer & communications rooms
- Ceramic & porcelain tile for floors
- Islamic special design for main steel gates
- Counters are made of granite & Corian countertops
- Stainless steel crowd control barrier

## External works consists of the following :

- Construct new roads with approximate area of 60000m<sup>2</sup>
- Construct 2 new roundabouts
- Paving works for approximate area of 105000m<sup>2</sup>
- Construct culvert boxes
- Roads Marking lines for buses and cars
- Signage system
- Concrete tile for sidewalks
- Construct Internal fair face walls (2000m<sup>2</sup>)
- Construct steel shelters (1200m<sup>2</sup>)
- Planter works
- Installation of gates
- Irrigation system and septic tanks work
- Trucks weighing station



# RAMTHA GOVERNMENTAL HOSPITAL

---





## Ramtha Governmental Hospital

| Number |                          | Item   |
|--------|--------------------------|--|
| 1      | Project Name             | Ramtha Governmental Hospital                   |
| 2      | Client                   | Ministry of Health                             |
| 3      | Tender Reference         | 2007/129                                       |
| 4      | Accepted Contract amount | 10.99 million JD                               |
| 5      | Final amount             | 12.0 million JD                                |
| 6      | Date of Order to Procee  | 2007/9/25                                      |
| 7      | Consultant               | Amman Consulting Engineering & Planning Office |
| 8      | Contract type            | Main Contractor                                |

## Project Components Description

| Number |                   | Item  |
|--------|-------------------|---|
| 1      | Nature of project | Construction of 5 story hospital building of 12000 m2 built up area with 12500 m2 site area and 150 beds capacity . |
| 2      | Project Location  | Ramtha – Jordan   |
| 5      | Number of floors  | 5 floors  |







|   |                           |  |
|---|---------------------------|--|
| 6 | <b>Scope of works</b>     | <ul style="list-style-type: none"> <li>• Skeleton work for the whole main building and other secondary buildings</li> <li>• Finishing works for the whole building and secondary buildings</li> <li>• Electromechanical works for the whole buildings</li> <li>• Infra and external works</li> <li>• Maintenance and Renovation works for the old building</li> </ul>  |
| 7 | <b>Project components</b> | <div> <div> <b>Main Building includes</b> <ul style="list-style-type: none"> <li>• Departments' offices for the old hospital and the new extension</li> <li>• Sections for various specialties</li> <li>• Emergency rooms</li> <li>• Intensive care units</li> <li>• Surgery theaters</li> <li>• Patients' rooms</li> <li>• Suites and clinics</li> <li>• Laboratory, pharmacy</li> <li>• X- ray rooms</li> <li>• Services' rooms</li> <li>• mortuary</li> </ul> </div> <div> <b>Maintenance and renovation works for the old hospital includes:</b> <ul style="list-style-type: none"> <li>• Stone cladding works for the external elevations</li> <li>• Maintenance work for the yards, sidewalks and entrances</li> <li>• Structural works</li> <li>• Raft foundation for the whole building area(3600m2)</li> <li>• Reinforced external concrete work</li> <li>• 30 cm reinforced concrete slab</li> </ul> <b>Electrical Works includes</b> <ul style="list-style-type: none"> <li>• Power supply network for all project's areas</li> <li>• Emergency power supply using backup generators and UPS system</li> <li>• Addressable fire alarm system</li> <li>• Audio system and IP telephony system</li> <li>• Data network system for the entire building and departments</li> <li>• Bed head units</li> <li>• Central clock system and nurse call system</li> <li>• Earthling system</li> <li>• Access control system</li> <li>• Closed circuits TV system (CCTV)</li> <li>• 5 passengers lifts</li> <li>• Lighting protection system</li> </ul> </div> </div> <div> <b>Mechanical works include</b> <ul style="list-style-type: none"> <li>• Plumbing works including handicapped Lavatories</li> <li>• HVAC system for entire building</li> <li>• Firefighting systems using sprinkler system and clean agent fire suppression system (fm200)</li> </ul> <b>Fresh air supply system</b> <ul style="list-style-type: none"> <li>• Medical gases networks and pressurized air system</li> <li>• Water purification system for dialysis</li> <li>• Catalytic water treatment system</li> <li>• Ro Water treatment system</li> <li>• Hot water calorifier system</li> </ul> </div> <div> <b>Finishes Works includes</b> <ul style="list-style-type: none"> <li>• External elevations consists of: <ul style="list-style-type: none"> <li>• Curtain wall system with double glazed vision panels</li> <li>• Stone cladding system ( Maan Stone )</li> </ul> </li> <li>• Installing and operating 5 main elevators servicing the building</li> <li>• Internal ceilings compose of: <ul style="list-style-type: none"> <li>• Fire resistance, water repellent Gypsum boards for wet Areas</li> <li>• Acoustic mineral fiber suspended ceiling tiles for patient rooms</li> </ul> </li> </ul> </div> |



- Laminated internal wooden doors
- Marble wall cladding system for corridors and lefts' elevations
- Mosaic tile covered with PVC
- Toilets' walls tiled with ceramic
- Internals stairs are tiled with Granite
- Counters are made of Granite and wood
- Fire rated doors installed at required designated locations
- Stainless steel balustrade
- Partitions are made of block
- Wall lining system comprising of lead for x-ray rooms.
- Signage system ts

#### External works consists of the following

- Secondary buildings includes :
- Medical gas Chamber
- Guard room
- Executing the Emergency power supply's (backup generators) Chamber
- Executing Underground water tanks with a capacity of 700 m3 approximately
- Executing the Service roads and Parking areas paved with asphalt with an approximate area of 6500m2
- Executing Sidewalks , planters and pathways
- External Lighting & firefighting network
- Executing External walls
- Executing external Gates

# COURT OF FIRST INSTANCE ZARQA



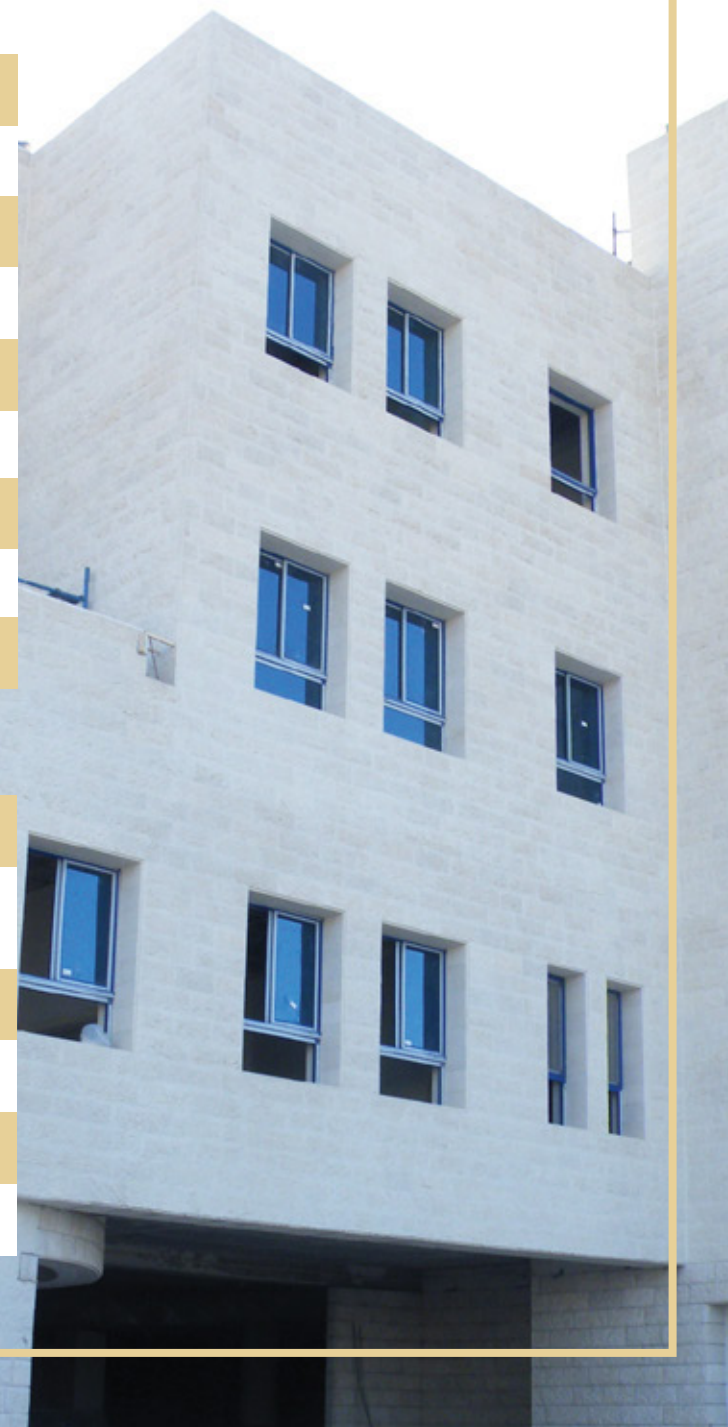


## Court of first instance - Zarqa

| Number |                          | Item                                 |
|--------|--------------------------|--------------------------------------|
| 1      | Project Name             | Court of first instance - Zarqa      |
| 2      | Client                   | Ministry of public work and housing  |
| 3      | Tender Reference         | 128/2008                             |
| 4      | Accepted Contract amount | 8.66 million JD                      |
| 5      | Final amount             | 8.9 million JD                       |
| 6      | Date of Order to Procee  | 2009/03/01                           |
| 7      | Consultant               | Ruqn al Handasa Consulting Engineers |
| 8      | Contract type            | Main Contractor                      |

## Project Components Description

| Number |                   | Item   |
|--------|-------------------|--|
| 1      | Nature of project | Construct and Execute skeleton works , finishes and external works for 4 stories Zarqa first instance court building |
| 2      | Project Location  | Zarqa  |
| 3      | Buildings Area    | 15,780.00 m2   |
| 4      | Plot Area         | 18,600.00 m2   |
| 5      | Number of floors  | 4 floors   |





6

## Scope of works

- Construction of the main court building with all the skeleton and finishes works
- Electromechanical works
- Gates installation
- Construction of the boundary walls
- Executing all work for the parking areas and yards

7

## Project components

- Main Building includes
- Departments' offices
- General court rooms
- General criminal court halls
- Public lobby and waiting area with special design
- Clerks' offices
- Achieve rooms , stores and services rooms
- Special design waiting halls & corridors

### Electrical Works includes

- Power supply network for all project's areas
- Emergency power supply using backup generators
- Fire alarm system
- Audio system and IP telephony system
- Data network system for the entire building and departments
- Earthling system
- Access control system
- Closed circuits TV system (CCTV)
- 3 Passengers' lifts in service

### Mechanical works include

- Plumping works including handicapped Lavatory
- HVAC system for entire building
- Firefighting systems
- Fresh air supply system
- Irrigation system
- Finishes Works includes
- Executing external elevations with Special design that consists of:  
Curtain wall system  
Stone cladding work (Ajluon Stone )
- Supply &Install suspended internal ceilings for all the building' ceilings
- Supply &Install Acoustical Insulation System and special decoration for the general criminal court halls
- Executing of isolated wood cladding for the internal partitions of the court room halls





PROJECT  
DESCRIPTION  
MINISTRY OF HEALTH  
NEW BUILDING

---



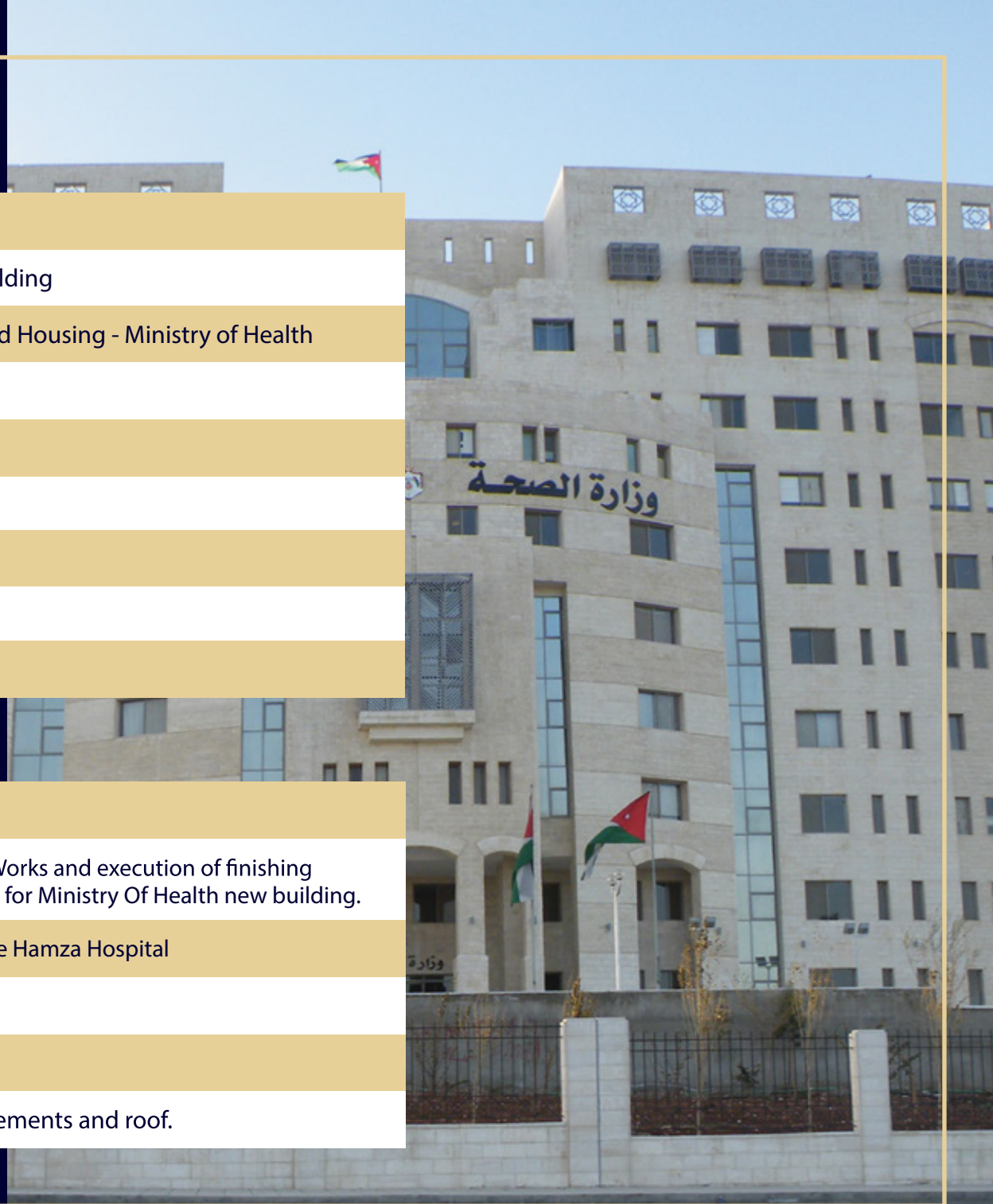


## Project Description Ministry Of Health New Building

| Number |                          | Item  |
|--------|--------------------------|---|
| 1      | Project Name             | Ministry Of Health New building                           |
| 2      | Client                   | Ministry of Public Works and Housing - Ministry of Health |
| 3      | Tender Reference         | 2006/19   |
| 4      | Accepted Contract amount | 7.82 million JD   |
| 5      | Final amount             | 9.2 million JD  |
| 6      | Date of Order to Procee  | 2006/12/20  |
| 7      | Consultant               | Sobeh Consultants   |
| 8      | Contract type            | Main Contractor   |

## Project Components Description

| Number |                   | Item   |
|--------|-------------------|--|
| 1      | Nature of project | The completion of Skeleton Works and execution of finishing and electromechanical works for Ministry Of Health new building. |
| 2      | Project Location  | Amman, Nweijes - Near Prince Hamza Hospital  |
| 3      | Buildings Area    | 27000 sqr.mtr  |
| 4      | Plot Area         | 35000 sqr.mtr  |
| 5      | Number of floors  | 13 floors including two basements and roof.  |





|                          |                           |   |
|--------------------------|---------------------------|---|
| 6                        | <b>Scope of works</b>     | <ul style="list-style-type: none"> <li>• Skeleton works of floors from 5th up to 10th and secondary buildings.</li> <li>• Finishing works and interior finishes for all floors from second basement to roof.</li> <li>• electromechanical works for whole project area including secondary buildings.</li> <li>• infrastructure works and external works.</li> </ul>  |
| 7                        | <b>Project components</b> | <div> <div> <p><b>Main building includes</b></p> <ul style="list-style-type: none"> <li>• departments offices for the Ministry.</li> <li>• Ministers office and secretaries.</li> <li>• lectures and seminars halls.</li> <li>• stores and service rooms.</li> <li>• Nursery and prayer areas for men and women.</li> </ul> <p><b>Secondary buildings include</b></p> <ul style="list-style-type: none"> <li>• Main gate and security rooms.</li> <li>• Three gates with security room for each one.</li> <li>• Concrete canopies finished with natural stone for managers parking.</li> <li>• Canopy for Minister's parking area.</li> <li>• Back-up generator and diesel storage room</li> </ul> </div> <div> <p><b>Architectural Elevations</b></p> <ul style="list-style-type: none"> <li>• External elevations finished with Rweished stone.</li> <li>• Front elevation includes stone special decorative shapes.</li> <li>• Large scaled stone arcs within elevation at high levels.</li> <li>• Glazed elevations within front elevation.</li> <li>• Construction of pergolas at windows for roof parapet and parts of front elevation.</li> </ul> <p><b>Civil works</b></p> <ul style="list-style-type: none"> <li>• Foundation and skeleton works for floors from second basement up to fourth floor were executed by previous contractor.</li> <li>• executed foundation consists of two main rafts in addition to a number of isolated footings.</li> <li>• all slabs are waffled slabs.</li> <li>• building structurally consists of 7 cores with shear walls and columns with beams and slabs.</li> <li>• external walls consist of reinforced concrete finished with stone built by wet method (steel mesh 1mm with spacers, ties and casting concrete between stone and walls)</li> </ul> </div> </div> |
| <b>Internal finishes</b> |                           | <ul style="list-style-type: none"> <li>• building is serviced by 6 elevators.</li> <li>• ceiling finishes consist of secondary ceiling for all areas.</li> <li>• all doors within project consist of laminated door leaves with metal frames.</li> <li>• doors for minister's office, secretaries offices and VIP rooms consist of Oak veneer and Solid Oak wood.</li> <li>• flooring of building consists of Granite ceramic and porcelain (European)</li> <li>• Minister's office and secretaries offices are tiled with natural granite stone, as well as lifts elevations.</li> <li>• offices partitions are made of gypsum board material.</li> <li>• toilets and WC areas partitions are made of specialized toilet dividers.</li> <li>• Internal stairs are Tiled with granite natural stone, and external stairs are tiled with natural local stone.</li> </ul>   |

### Internal finishes

- Counters consist of wood, granite and korean.
- rails for terraces are made of stainless steel.
- circular columns and decorative columns in Hall area finished with stainless steel cladding.
- fire rated doors for staircases (additional works)
- internal Hall ceiling consists of a skylight (Aluminum and reflective double glass with approximate area of 300 sqr.mtr.)

### Internal finishes and furniture

- ceiling finishes consist of secondary ceiling for all areas.
- natural stone custom decoration for minister's office entrance.
- custom marble floor finish with patterns for minister's office entrance.
- Circular and hall columns are finished with stainless steel cladding.
- floors hall ways sides finished with glazed stainless steel balustrades.
- back yards flooring consists of colored stamped concrete.



### Electromechanical works :

#### Electrical works

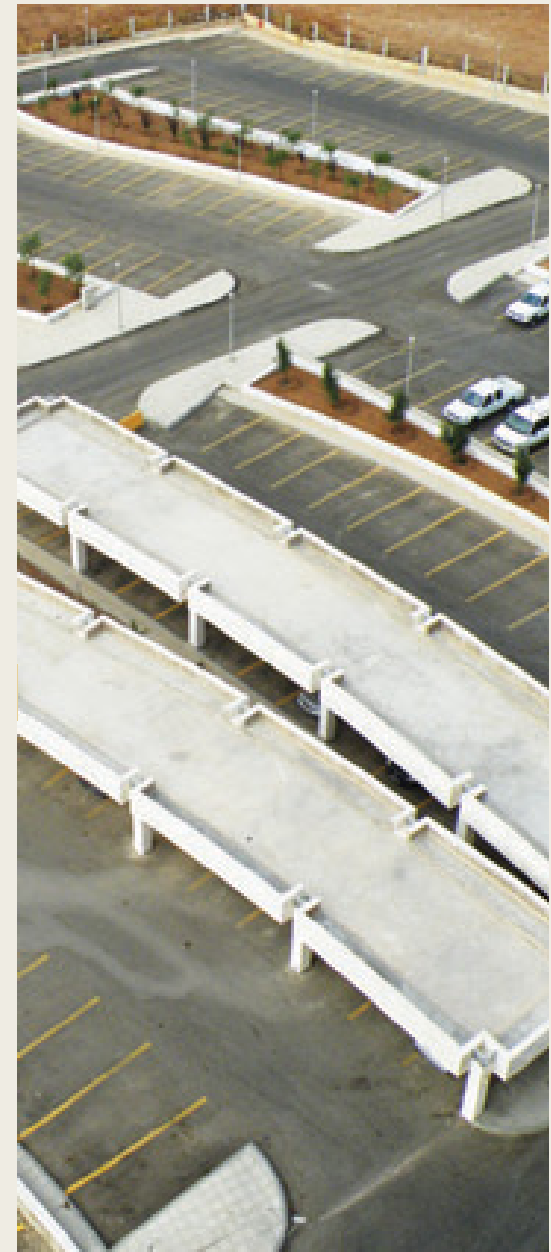
- Power distribution to all building areas.
- internal, external and emergency lighting systems as well as exit sign lights.
- backup power system using a generator and UPS system.
- addressable fire alarm system.
- lightening protection system.
- evacuation system.
- public address system.
- Audio and phone system.
- Data system for entire building.

#### Mechanical works

- Plumbing works including handicap toilets.
- HVAC system for the entire building.
- Fire fighting sprinkler system.
- Pressurized fans for fire control at certain areas.
- fresh air supply system.
- smoke suction fans for Hall area.
- irrigation system.

### External works consist of the following:

- secondary buildings including :
  - concrete canopies for parking spaces (area of 600 sqr.mtr)
  - four gates with security rooms.
  - Concrete canopies finished with natural stone for VIP parking spaces (area of 200 sqr.mtr)
  - backup Generator room, transformer room and fuel storage room.
  - underground water tanks with storing capacity of 800 cubic meters approximately.
  - water pump station rooms for water supply and fire fighting system.
- internal walls and fences are finished with natural stone.**  
**service roads and parking spaces are paved with asphalt with an area of approximately 15000 sqr.mtr.**  
**planters, sidewalks and internal decorative walls.**  
**building entrances are tiled with natural stone.**  
**yards are finished with screed and colored stamped concrete.**  
**External lighting system.**  
**fire fighting networks for external area.**







- Supply & Install the Judges' Bench with a raised wooden dais
- Supply & Install seats for all court halls
- Supply & Install Corian top counters for the public lobby and waiting areas
- Supply & Install wood & granite counters for court rooms
- Supply & Install gypsum decoration for the skylight parapet
- Executing Special Islamic pattern design for the main entrances steel gates
- Supply & Install Fire rated internal wooden doors
- Supply & Install external steel doors
- Supply & Install stainless steel balustrade for terraces
- Supply & Install internal wooden doors with steel frames
- Supply & Install ceramic & porcelain tile for floor
- Supply & Install porcelain & granite cladding for corridors' walls and lefts 'elevations
- Supply & Install granit tile for internal stairs
- Executing of two skylights

#### External works consists of the following

##### Secondary buildings include

- Executing Two guard rooms
- Supply & Install the external steel Gates
- Executing the Generator's room
- Executing 2 Underground water tanks with a capacity of 400 m3 approximately

**Executing the Service roads and Parking areas paved with asphalt with an approximate area of 3700 m2**

**Executing Sidewalks , planters and pathways**

**External Lighting & firefighting network**

ADMINISTRATION  
BUILDING & CLINICS  
BUILDING IN QUEEN  
ALIA MILITARY  
HOSPITAL

---



## Project description administrative and outpatient clinic buildings..

| Number |                         | Item   |
|--------|-------------------------|--|
| 1      | Project Name            | Administration Building and Clinics Building In Queen Alia Military Hospital |
| 2      | Client                  | Royal Medical Services – Establishment of Housing And Military works         |
| 3      | Tender Reference        | 2014/22/ ع س ش   |
| 4      | Tender Amount           | 4.88 Million JOD actual value 6.875 Million JOD                              |
| 5      | Date of Order to Procee | 2015/5/17  |
| 6      | Consultant              | Establishment of Housing And Military works                                  |

## Project Components Description

| Number |                   | Item   |
|--------|-------------------|--|
| 1      | Nature of project | Nature of Project: construction of the clinics buildings (4800 sqm) and the administrative building (4400 sqm) along with secondary buildings (200 sqm) including all finishing and electromechanical works aside to construction and finishes of external works and coordination and installation of medical furnature. |
| 2      | Project Location  | Amman - Jordan   |
| 3      | Buildings Area    | 9400 sqm   |
| 4      | Plot Area         | within the location of Queen alia Military hospital.   |
| 5      | Number of floors  | Administration Building : 5 floors<br>External Clinics Building : 3 floors   |







|   |                |  |
|---|----------------|--|
| 6 | Scope of works | <b>1. Demolition of the existing clinics building</b><br><b>2. Administration Building</b> <ul style="list-style-type: none"> <li>• Executing skeleton, electro-mechanical, external and finishes works for the building that consists of 5 floors with 4412 m2 estimate area.</li> </ul> <b>3. External Clinics Building</b> <ul style="list-style-type: none"> <li>• Executing skeleton, electro-mechanical, external and finishes works for the building that consists of 3 floors with 4803 m2 estimate area.</li> </ul> |
|---|----------------|--|

|   |                    |   |
|---|--------------------|---|
| 7 | Project components | <p><b>External Clinics building includes:</b></p> <ul style="list-style-type: none"> <li>• Departments' offices</li> <li>• Different specialties clinics' areas</li> <li>• Patients' waiting areas</li> <li>• Laboratories &amp; pharmacy</li> <li>• e.X- ray rooms</li> <li>• Special design waiting halls &amp; corridors</li> <li>• Services rooms</li> <li>• Archives rooms</li> </ul> <p><b>Administration building includes:</b></p> <ul style="list-style-type: none"> <li>Dental clinics</li> <li>Dental labs</li> <li>Server rooms</li> <li>Meeting rooms</li> <li>X-rays rooms</li> <li>Dialysis section</li> <li>Services rooms</li> <li>Officers sleeping areas</li> </ul> <p><b>Electrical Works includes</b></p> <ul style="list-style-type: none"> <li>• Power supply network for all project's areas</li> </ul> |
|---|--------------------|---|

- Emergency power supply using backup generators and UPS system
- Addressable fire alarm system
- d.Audio system and IP telephony system
- Data network system for the entire building and departments
- Earthling system
- Access control system
- Public address system
- Clock system
- Closed circuits TV system (CCTV)
- Two passengers lifts
- Lighting protection system

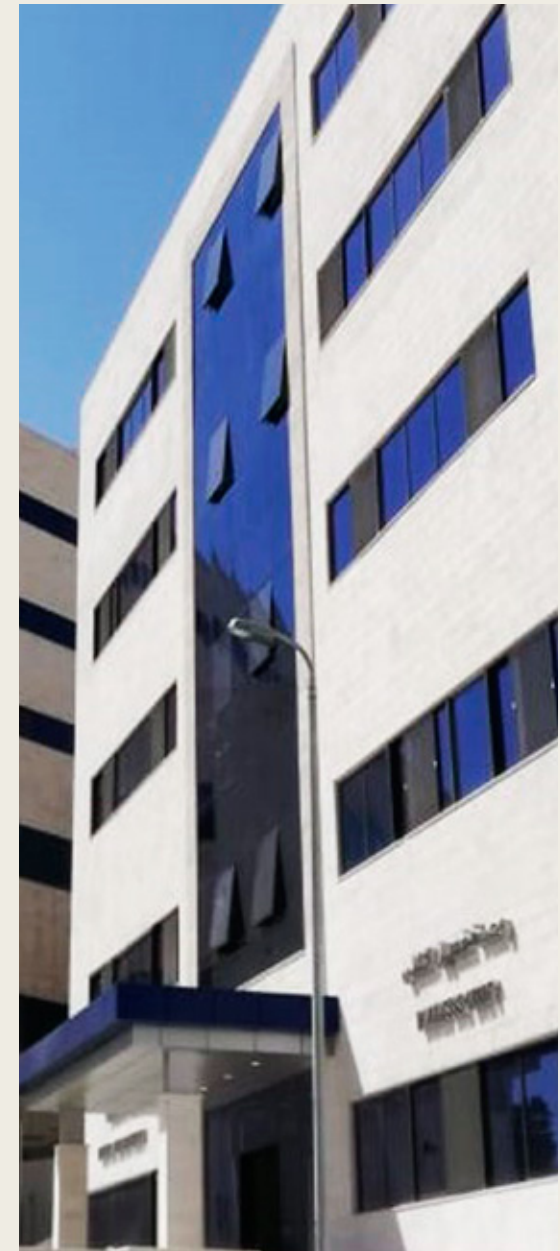
#### **Mechanical work includes**

- Plumbing works including handicapped Lavatories
- Water purification system for dialysis
- HVAC system for entire building
- Firefighting systems using sprinkler system and FM200
- Fresh air supply system
- Medical gases networks
- Ro Water treatment system

#### **Finishes Works includes**

- **External elevations consists of:**

- Curtain wall system with double glazed vision panels
- Stone cladding system ( Rewashed Stone )
- Installing and operating 2 main elevators servicing the building
- Internal ceilings compose of suspended ceilings
- Laminated internal wooden doors
- Internal flooring is executed using porcelain tiles
- Marble flooring and wall cladding system for lifts' elevations
- High pressure laminated wall cladding system(HPL) for Toilets' partitions
- Toilets' walls tiled with ceramic
- Internals stairs are tiled with Granite
- Counters are made of HPL panels for elevations and PDF for tops
- Marble Emprador used for vanities' tops
- Fire rated doors installed at required designated locations
- Stainless steel balustrade
- Main Partitions are made of block
- Wall lining system comprising of lead lined for x-ray rooms.
- Shield wooden doors for X-ray rooms
- Signage system

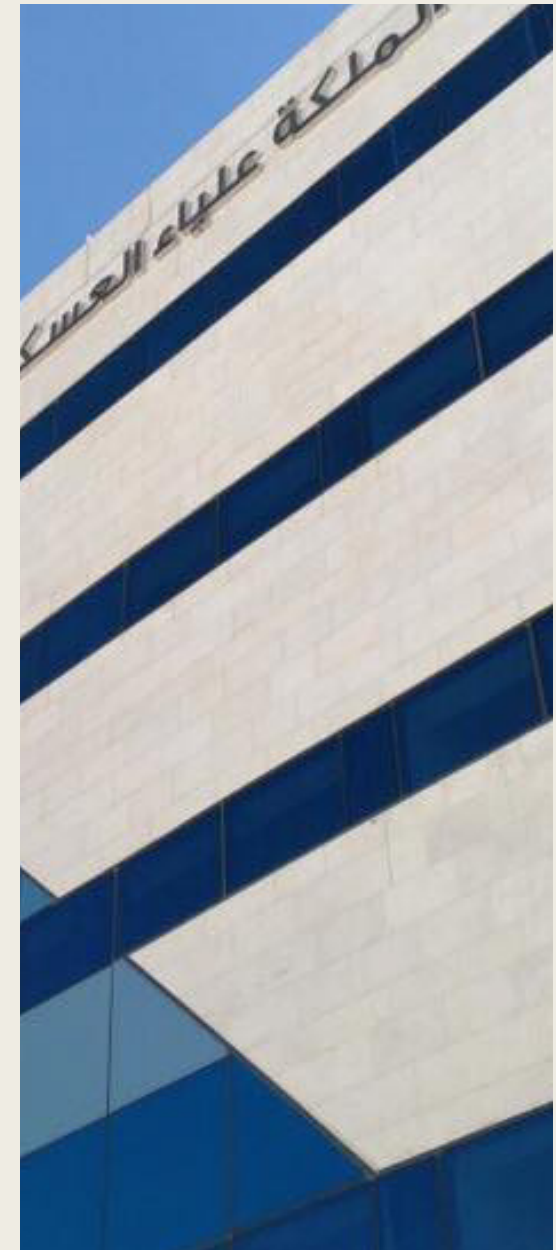


### External works consists of the following

- Executing the Service roads and Parking areas paved with asphalt.
- Executing Sidewalks and planters.
- Installation of External Lighting.

### Variation orders

- Executing the tunnel between the administration' building and the tumors' building
- Executing The boundary walls
- The main gate works





# AL KARAK COURTS COMPLEX

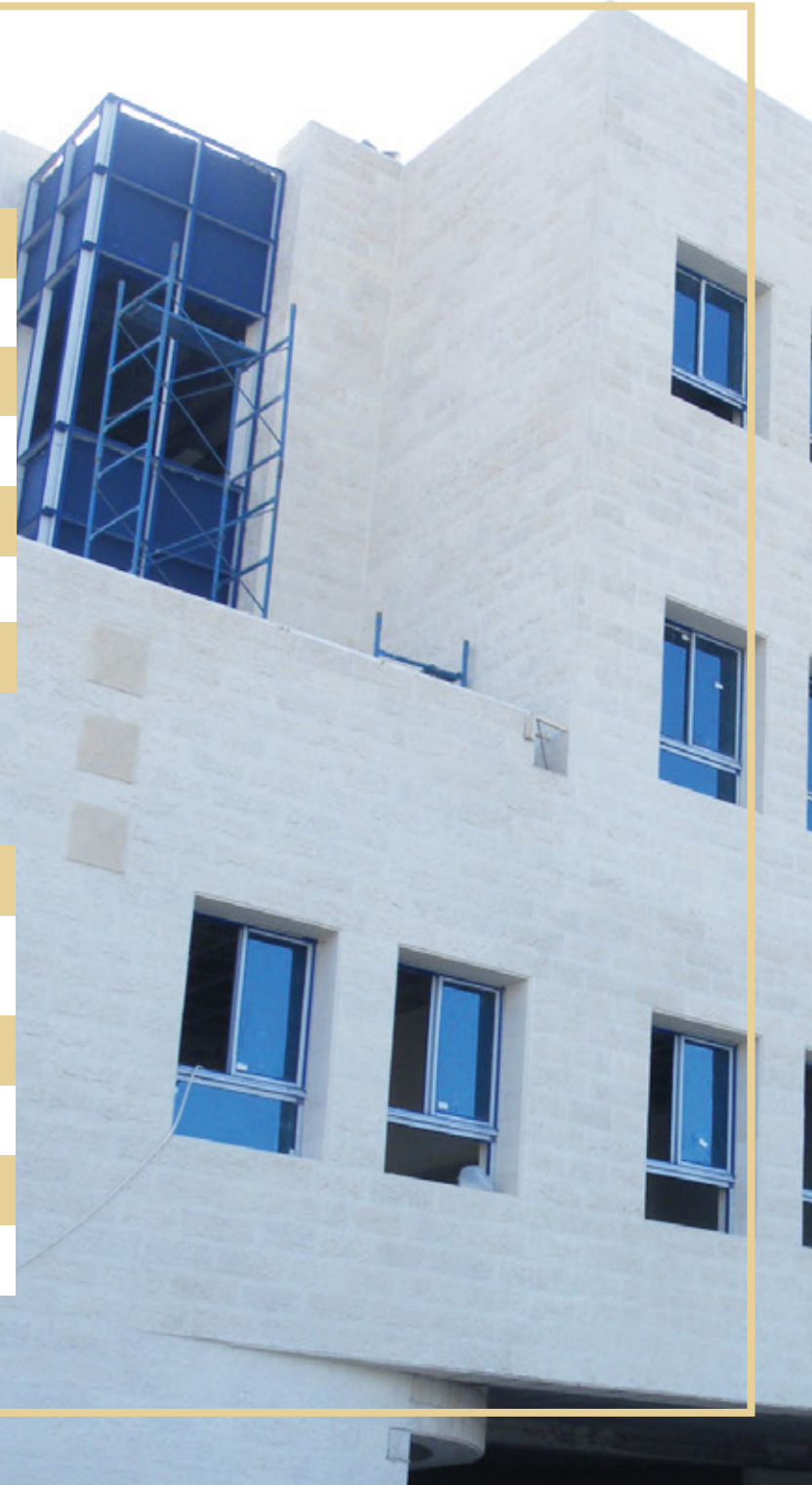


# Karak courts complex

| Number |                         | Item                                |
|--------|-------------------------|-------------------------------------|
| 1      | Project Name            | Karak Courts complex                |
| 2      | Client                  | Ministry of public work and housing |
| 3      | Tender Reference        | 2003 – 138                          |
| 4      | Tender Amount           | 3.62 million JOD                    |
| 5      | Date of Order to Procee | 2005/04/23                          |
| 6      | Consultant              | Sigma Engineering consultants       |

## Project Components Description

| Number |                   | Item  |
|--------|-------------------|---|
| 1      | Nature of project | Construct and Execute skeleton works , finishes and external works for the Karak courts complex building. |
| 2      | Project Location  | Al-Karak - Al-thaneieieh  |
| 3      | Buildings Area    | 8700 m2   |
| 4      | Plot Area         | 9500 m2   |
| 5      | Number of floors  | 4 including one basement  |







6

## Scope of works

- Complex administration offices, judges' offices and departments.
- Various court rooms.
- Rooms of the criminal court with sound insulation and custom decorations.
- Waiting rooms of distinct decorations.
- Storage and services rooms.

7

## Project components

### Electrical Works includes

- Electrical power supply networks to all project components.
- Backup power generation system.
- Fire alarm system and lightening protection system.
- Audio and telephone system.
- Information technology network.

### Mechanical work includes

- Plumbing works including handicapped toilets
- HVAC system for entire building
- Firefighting systems
- Fresh air supply system
- Irrigation system

### Finishes Works includes

- All External elevations using natural stone.
- The building is equipped with 3 elevators.
- All ceilings comprise of suspended false ceilings.
- Internal doors comprise of HPL coated wooden leaves with steel frames.
- Flooring comprising of porcelain and European granite ceramic.
- Tiles for lift lobbies and halls of natural granite.
- Gypsum board partitions at various locations.
- Sound insulation and custom finishes for halls of criminal court.
- Internal stairs flooring is finished with natural granite.
- Counters comprising of wood and granite.
- Stainless steel Balconies balustrades
- Fire rated doors at designated locations.
- Skylight and canopy comprising of aluminum and tempered glass.

## External works consists of the following

### Secondary buildings include

- Gates with four guard rooms.
- Backup generator room
- underground water tanks (400 m3 capacity)

### External walls and fences.

**Executing the Service roads and Parking areas paved with asphalt with an approximate area of 3700 m2**

**Executing Sidewalks , planters and pathways**

**External walkways are tiles with cement tiles.**

**External Lighting & firefighting network**





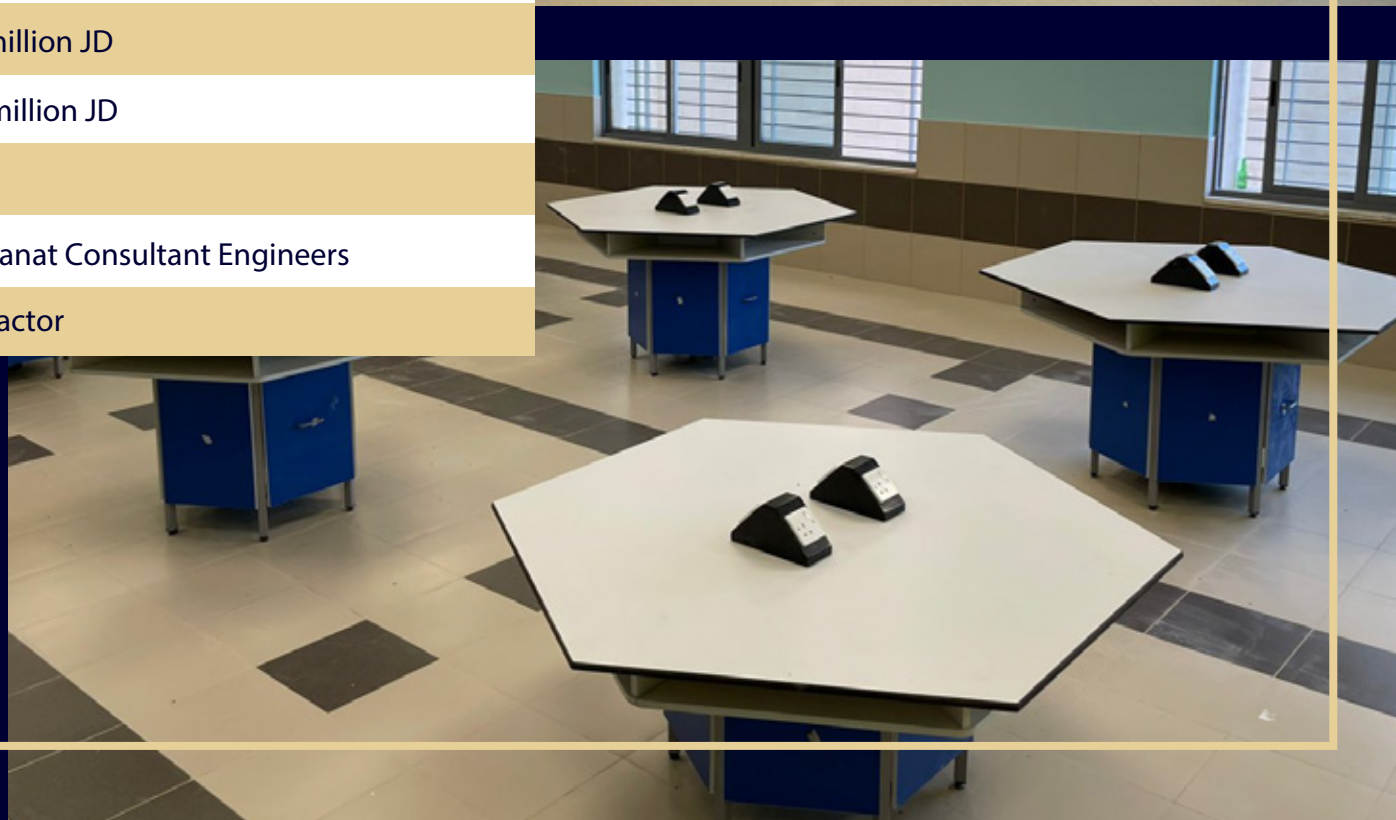
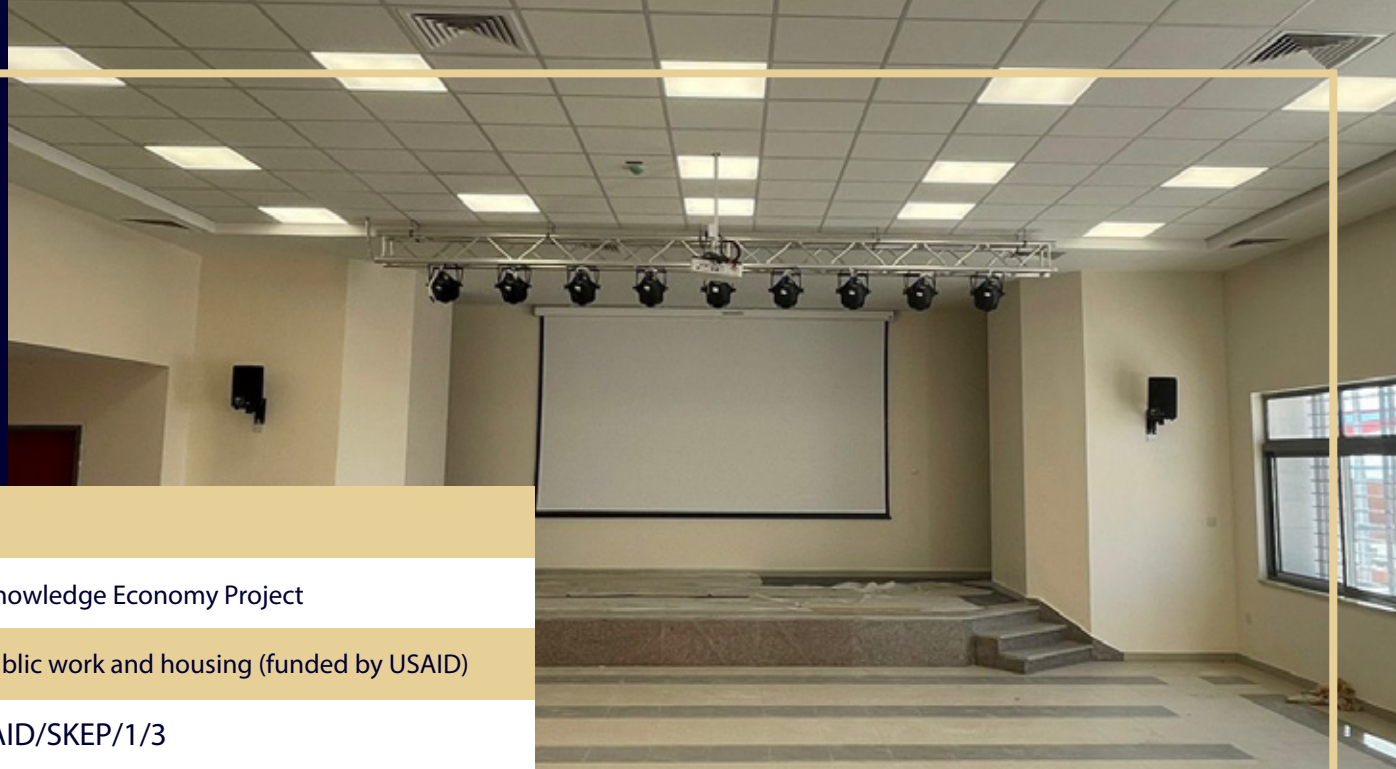
SCHOOLS FOR  
KNOWLEDGE  
ECONOMY  
PROJECT (SKEP)  
1 PACKAGE / 3 PHASE

---



# Schools for Knowledge Economy Project

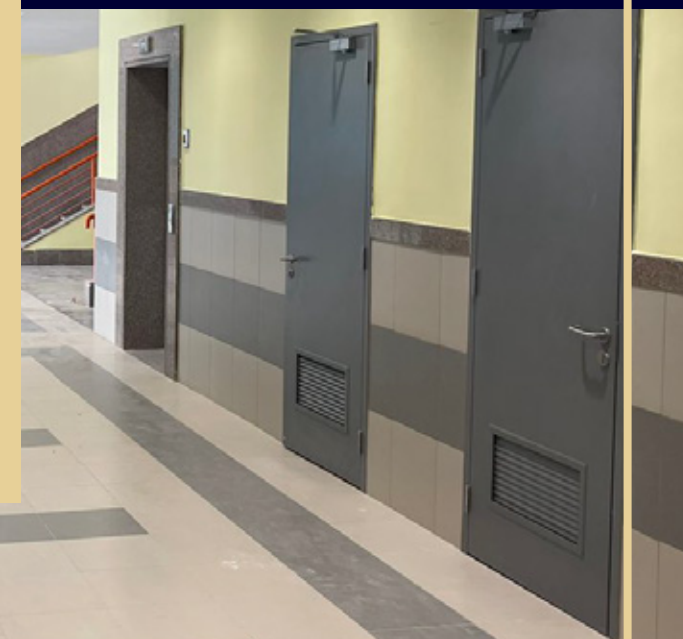
| Number |                          | Item  |
|--------|--------------------------|---|
| 1      | Project Name             | Schools for Knowledge Economy Project                 |
| 2      | Client                   | Ministry of Public work and housing (funded by USAID) |
| 3      | Tender Reference         | 2020/1/USAID/SKEP/1/3                                 |
| 4      | Accepted Contract amount | 9,787,502 million JD                                  |
| 5      | Final amount             | 9,581,417 million JD                                  |
| 6      | Date of Order to Procee  | 2020/12/19  |
| 7      | Consultant               | Wahib Medanat Consultant Engineers                    |
|        | Contract type            | Main Contractor                                       |





## Project Components Description

| Number                |                   | Item   |
|-----------------------|-------------------|--|
| 1                     | Nature of project | Execution of Excavation works, sub-structure and super-structure works, interior finishes works, Elevations, External works and Electromechanical works for three schools with total area of 5341m <sup>2</sup> for Khadija Bent Khwailed School (3 floors), 6258m <sup>2</sup> for Um Al-Dananir School (4 floors) and 6432m <sup>2</sup> for Al-Khansa' School (4 floors).   |
| 2                     | Project Location  | Ain Al-Basha (Balqa') and Al-Shouna Al-Janobia   |
| 3                     | Number of floors  | 3 floors for one of the schools, and 4 floors for each of the other two schools  |
| <b>Scope of Works</b> |                   | <ol style="list-style-type: none"> <li>1. Excavations and Earthing works</li> <li>2. Sub-Structure and Super-Structure works</li> <li>3. Interiors finishes for all areas</li> <li>4. Stone Elevations Works</li> <li>5. Curtain walls and windows works</li> <li>6. Electromechanical works for whole project areas including external area</li> <li>7. Concrete water tanks and rainwater harvesting tanks</li> <li>8. Sewage collection concrete tanks</li> <li>9. Fences, parking spaces, play grounds, assembly yards &amp; Gates</li> <li>10. Boundary walls</li> <li>11. External area works</li> </ol> |







## Project Components

### 1. Main Buildings include :

- a. Khadija Bent Khwailed School building (Al-Shouna Al-Janobia)
- b. Um Al-Dananir School building (Ain Al-Basha-Balqa')
- c. Al-Khansa' School building (Al-Shouna Al-Janobia)

### 2. Electrical Works includes

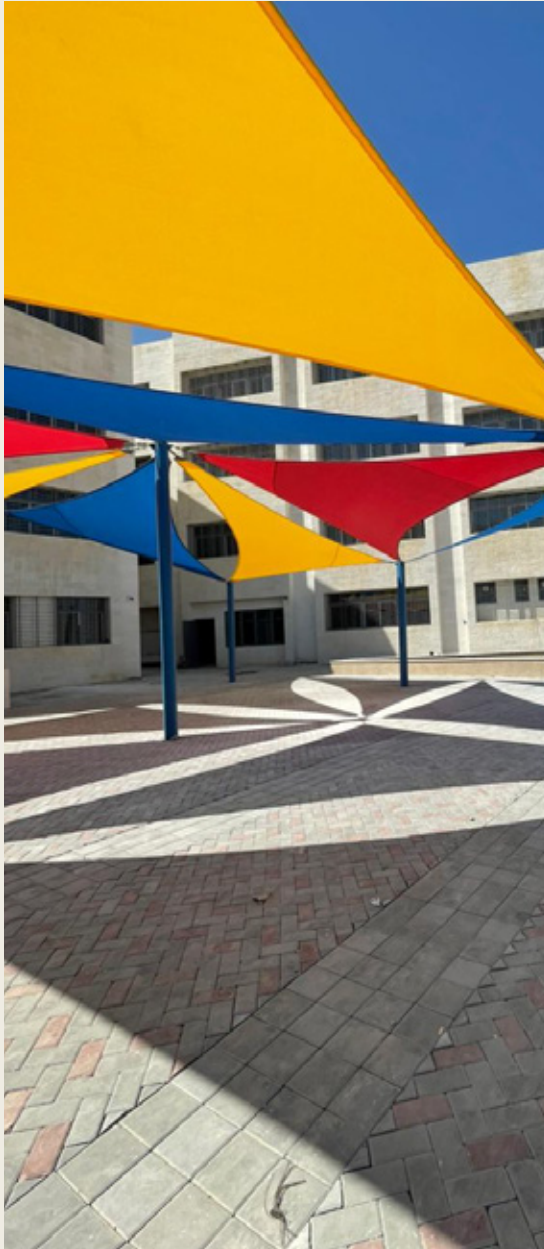
- a. Power supply network for all project areas
- b. Emergency power supply system using backup generators
- c. Audio / Video system
- d. Data network system for entire buildings
- e. Earthing system
- f. Lightning protection system
- g. Lighting systems
- h. External lighting
- i. CCTV System (Security system)
- j. Three Transformer stations
- k. Intrusion detection systems

### 3. Mechanical works includes

- a. Plumbing works including handicapped toilets
- b. HVAC system for entire buildings
- c. Firefighting systems using Fire hose reel and portable extinguishers
- d. Fresh air supply and exhaust fans
- e. Boiler room
- f. Rain water piping system & rain water collection tank
- g. LPG network for laboratories

### 4. Finishes Works includes :

- a. External elevations consists of :
  - Aluminum framed double glazed curtain wall system
  - Limestone cladding system
  - Windows Screens
  - Aluminum and steel doors.
- b. Installing and operating 3 elevators, one for each school serving all floors per school.
- c. Ceiling finishes consist of :
  - Moisture resistance Gypsum board for wet Areas
  - Suspended mineral fiber board acoustical tile fire resistant
  - Aluminum Ceiling (ACP).



- d. Internal doors consists of laminated timbered doors leaf and steel frames
- e. Laboratory furniture for different specialties.
- f. Steel doors for plant rooms
- g. Granite tile for Internal stairs
- h. Stair balustrade & handrails
- i. Ceramic tile for walls using designated colors and patterns
- j. Porcelain tile for floor using designated colors and patterns
- k. Porcelain tile for walls at corridors and laboratories using designated colors and patterns
- l. Granite tile for Lifts elevations
- m. Granite elevations for stairs.
- n. Sound insulation for theaters and library
- o. Stage and flooring for Multi-purpose hall
- p. Fire rated doors installed at required designated locations
- q. Toilets partitions are block low partitions covered with ceramic tiles

**External works consists of the following:**

- a. External fences made of Steel
- b. External boundary wall made of concrete and block covered with colored plastering.
- c. Parking space areas paved using asphalt
- d. Interlocking tiles and cement tiles areas
- e. Limestone paving for Entrances
- f. Limestone stairs for Entrances
- g. Playgrounds with equipment for various sports
- h. Shading elements with various designs
- i. Steel Gates and steel handrails
- j. Guard rooms
- k. Planters & sidewalks
- l. External playground area for kindergarten
- m. Soft-scape works using designated planting
- n. Underground water tanks and sewage collection tanks











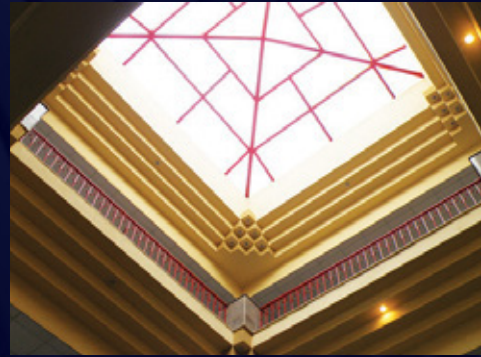


## OTHER PROJECTS EXECUTED BY THE COMPANY





|                |                        |
|----------------|------------------------|
| Project's name | Faculty of Engineering |
| Location       | Mutah University       |
| Buildings area | 12800 sqm              |
| Project area   | 14000 sqm              |
| Value of works | 1.60 Million JOD       |



|                |                  |
|----------------|------------------|
| Project's name | Lecture halls    |
| Location       | Mutah University |
| Buildings area | 7000 sqm         |
| Project area   | 6000 sqm         |
| Value of works | 1.04 Million JOD |

|                |                      |
|----------------|----------------------|
| Project's name | Ghor-Almazraa school |
| Location       | Al-Karak             |
| Buildings area | 5500 sqm             |
| Project area   | 10000 sqm            |
| Value of works | 1.90 Million JOD     |





# ISO CERTIFICATE



## CERTIFICATE



**Management System as per ISO 45001 : 2018**

In accordance with TÜV AUSTRIA procedures, it is hereby certified that



**DERAR SARAIHEH & SONS**  
FOR ENGINEERING & CONTRACTING

شركة صرار الصرايرة ولدايه  
للمهندسة والتبني

**DERAR AL SARAIHEH AND SONS FOR ENGINEERING & CONTRACTING CO.**  
Al Swifieh, Zahran Street, Jawhart Al Swifieh Building, 5th Floor  
1943, AMMAN, JORDAN

Applies an Occupational health and safety management system in line with the above Standard for the following Scope

**GENERAL CONSTRUCTION CONTRACTOR SPECIALIZED IN BUILDINGS, MEP WORKS AND RENEWABLE ENERGY.**

Certificate Registration No.: 20152230019899

Valid until: 2026-06-21



Maria Agapitou  
Head of Management Systems & Products Certification Division  
Certification Body  
at TÜV AUSTRIA

Athens, 2023-06-22

This certification was conducted in accordance with TÜV AUSTRIA auditing and certification procedures and is subject to regular surveillance audits.

TÜV AUSTRIA HELLAS  
429, Mesogion Ave.  
GR-153 43 Athens, Greece  
www.tuv.austria.gr  
CEMR No.: 1550201060




CERTIFICATE AT 004711-0004




## CERTIFICATE



**Management System as per EN ISO 14001 : 2015**

In accordance with TÜV AUSTRIA procedures, it is hereby certified that



**DERAR SARAIHEH & SONS**  
FOR ENGINEERING & CONTRACTING

شركة صرار الصرايرة ولدايه  
للمهندسة والتبني

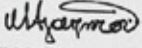
**DERAR AL SARAIHEH AND SONS FOR ENGINEERING & CONTRACTING CO.**  
Al Swifieh, Zahran Street, Jawhart Al Swifieh Building, 5th Floor  
1943, AMMAN, JORDAN

Applies an Environmental Management System in line with the above Standard for the following Scope

**GENERAL CONSTRUCTION CONTRACTOR SPECIALIZED IN BUILDINGS, MEP WORKS AND RENEWABLE ENERGY.**

Certificate Registration No.: 20051230009608

Valid until: 2026-06-21




Maria Agapitou  
Head of Management Systems & Products Certification Division  
Certification Body  
at TÜV AUSTRIA

Athens, 2023-06-22

This certification was conducted in accordance with TÜV AUSTRIA auditing and certification procedures and is subject to regular surveillance audits.

TÜV AUSTRIA HELLAS  
429, Mesogion Ave.  
GR-153 43 Athens, Greece  
www.tuv.austria.gr  
CEMR No.: 1550201060




CERTIFICATE AT 004711-0004



## CERTIFICATE



**Management System as per EN ISO 9001 : 2015**

In accordance with TÜV AUSTRIA procedures, it is hereby certified that



**DERAR SARAIHEH & SONS**  
FOR ENGINEERING & CONTRACTING

شركة صرار الصرايرة ولدايه  
للمهندسة والتبني

**DERAR AL SARAIHEH AND SONS FOR ENGINEERING & CONTRACTING CO.**  
Al Swifieh, Zahran Street, Jawhart Al Swifieh Building, 5th Floor  
1943, AMMAN, JORDAN

Applies a Quality Management System in line with the above Standard for the following Scope

**GENERAL CONSTRUCTION CONTRACTOR SPECIALIZED IN BUILDINGS, MEP WORKS AND RENEWABLE ENERGY.**

Certificate Registration No.: 20001230860697

Valid until: 2026-06-21



Maria Agapitou  
Head of Management Systems & Products Certification Division  
Certification Body  
at TÜV AUSTRIA

Athens, 2023-06-22

This certification was conducted in accordance with TÜV AUSTRIA auditing and certification procedures and is subject to regular surveillance audits.

TÜV AUSTRIA HELLAS  
429, Mesogion Ave.  
GR-153 43 Athens, Greece  
www.tuv.austria.gr  
CEMR No.: 1550201060




CERTIFICATE AT 004711-0004

**TÜV**  
AUSTRIA

EN ISO 14001:2015

**TÜV**  
AUSTRIA

EN ISO 9001:2015

**TÜV**  
AUSTRIA

ISO 45001:2018





*Thank You!*



**EN ISO 9001:2015**  
**EN ISO 14001:2015**  
**ISO 45001:2018**

Zahran street | Jawhret al Sweefieh Center (267) | Tel: +962 6 5852404 | Fax: +962 6 5852442  
Mob: +962 77 7810007 | Mob: +962 79 5222912 | P.O.Box: 1943 Amman 11941 Jordan  
Email: [Info@dss.com.jo](mailto:Info@dss.com.jo) | [www.dss.com.jo](http://www.dss.com.jo)